

## Product datasheet for **TP314598M**

### **NTH1 (NTHL1) (NM\_002528) Human Recombinant Protein**

#### **Product data:**

**Product Type:** Recombinant Proteins  
**Description:** Recombinant protein of human nth endonuclease III-like 1 (E. coli) (NTHL1), 100 µg  
**Species:** Human  
**Expression Host:** HEK293T  
**Expression cDNA Clone or AA Sequence:** >RC214598 representing NM\_002528  
**Red**=Cloning site **Green**=Tags(s)

MCSPQESGMTALSARMLTRSRLGPGAGPRGCREEPGLRRREAAAEARKSHSPVKRPRKAQRLRVAYEG  
SDSEKGEAEPLKVPVWEPQDWQQQLVNIRAMRNKKDAPVDHLGTEHCYDSSAPPKVRRYQVLLSLMLSS  
QTKDQVTAGAMQRLRARGLTVDLSILQTDDATLGKLIYPVGFWRSKVKYIKQTSAILQQHYGGDIPASVAE  
LVALPGVGPMAHLAMAVAWGTVSGIAVDTHVHRIANRLRWTKKATKSPEETRAALEEWLPRELWHEING  
LLVGFGQQTCLPVHPRCHACLNQALCPAAQGL

**TR**TRPLE**QKLISEEDLAANDILDYKDDDDK**V

**Tag:** C-Myc/DDK  
**Predicted MW:** 34.2 kDa  
**Concentration:** >0.05 µg/µL as determined by microplate BCA method  
**Purity:** > 80% as determined by SDS-PAGE and Coomassie blue staining  
**Buffer:** 25 mM Tris-HCl, 100 mM glycine, pH 7.3, 10% glycerol  
**Preparation:** Recombinant protein was captured through anti-DDK affinity column followed by conventional chromatography steps.  
**Note:** For testing in cell culture applications, please filter before use. Note that you may experience some loss of protein during the filtration process.  
**Storage:** Store at -80°C.  
**Stability:** Stable for 12 months from the date of receipt of the product under proper storage and handling conditions. Avoid repeated freeze-thaw cycles.  
**RefSeq:** [NP\\_002519](#)  
**Locus ID:** 4913



[View online »](#)

UniProt ID: [P78549](#), [E5KTI5](#)

RefSeq Size: 1097

Cytogenetics: 16p13.3

RefSeq ORF: 936

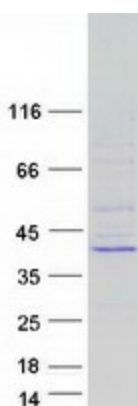
Synonyms: FAP3; hNTH1; NTH1; OCTS3

**Summary:** The protein encoded by this gene is a DNA N-glycosylase of the endonuclease III family. Like a similar protein in *E. coli*, the encoded protein has DNA glycosylase activity on DNA substrates containing oxidized pyrimidine residues and has apurinic/apyrimidinic lyase activity. [provided by RefSeq, Oct 2008]

**Protein Families:** Druggable Genome, Stem cell - Pluripotency

**Protein Pathways:** Base excision repair

### Product images:



Coomassie blue staining of purified NTHL1 protein (Cat# [TP314598]). The protein was produced from HEK293T cells transfected with NTHL1 cDNA clone (Cat# [RC214598]) using MegaTran 2.0 (Cat# [TT210002]).