

Product datasheet for **TP314598L**

NTH1 (NTHL1) (NM_002528) Human Recombinant Protein

Product data:

Product Type:	Recombinant Proteins
Description:	Recombinant protein of human nth endonuclease III-like 1 (E. coli) (NTHL1), 1 mg
Species:	Human
Expression Host:	HEK293T
Expression cDNA Clone or AA Sequence:	>RC214598 representing NM_002528 Red =Cloning site Green =Tags(s)

MCSPQESGMTALSARMLTRSRLGPGAGPRGCREEPGLRRREAAAEARKSHSPVKRPRKAQRLRVAYEG
SDSEKGEAEPLKVPVWEPQDWQQQLVNIRAMRNKKDAPVDHLGTEHCYDSSAPPKVRRYQVLLSLMLSS
QTKDQVTAGAMQRLRARGLTVDLSILQTDDATLGKLIYPVGFWRSKVKYIKQTSAILQQHYGGDIPASVAE
LVALPGVGPMAHLAMAVAWGTVSGIAVDTHVHRIANRLRWTKKATKSPEETRAALEEWLPRELWHEING
LLVGFGQQTCLPVHPRCHACLNQALCPAAQGL

TRTRPLEQKLISEEDLAANDILDYKDDDDKV

Tag:	C-Myc/DDK
Predicted MW:	34.2 kDa
Concentration:	>0.05 µg/µL as determined by microplate BCA method
Purity:	> 80% as determined by SDS-PAGE and Coomassie blue staining
Buffer:	25 mM Tris-HCl, 100 mM glycine, pH 7.3, 10% glycerol
Preparation:	Recombinant protein was captured through anti-DDK affinity column followed by conventional chromatography steps.
Note:	For testing in cell culture applications, please filter before use. Note that you may experience some loss of protein during the filtration process.
Storage:	Store at -80°C.
Stability:	Stable for 12 months from the date of receipt of the product under proper storage and handling conditions. Avoid repeated freeze-thaw cycles.
RefSeq:	NP_002519
Locus ID:	4913



[View online »](#)

UniProt ID: [P78549](#), [E5KTI5](#)

RefSeq Size: 1097

Cytogenetics: 16p13.3

RefSeq ORF: 936

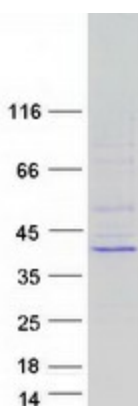
Synonyms: FAP3; hNTH1; NTH1; OCTS3

Summary: The protein encoded by this gene is a DNA N-glycosylase of the endonuclease III family. Like a similar protein in *E. coli*, the encoded protein has DNA glycosylase activity on DNA substrates containing oxidized pyrimidine residues and has apurinic/apyrimidinic lyase activity. [provided by RefSeq, Oct 2008]

Protein Families: Druggable Genome, Stem cell - Pluripotency

Protein Pathways: Base excision repair

Product images:



Coomassie blue staining of purified NTHL1 protein (Cat# [TP314598]). The protein was produced from HEK293T cells transfected with NTHL1 cDNA clone (Cat# [RC214598]) using MegaTran 2.0 (Cat# [TT210002]).