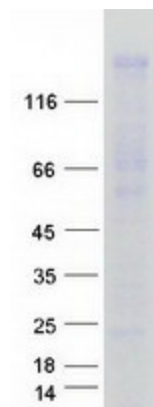


Preparation:	Recombinant protein was captured through anti-DDK affinity column followed by conventional chromatography steps.
Note:	For testing in cell culture applications, please filter before use. Note that you may experience some loss of protein during the filtration process.
Storage:	Store at -80°C.
Stability:	Stable for 12 months from the date of receipt of the product under proper storage and handling conditions. Avoid repeated freeze-thaw cycles.
RefSeq:	NP_056053
Locus ID:	23286
UniProt ID:	Q8IX03
RefSeq Size:	4171
Cytogenetics:	5q34
RefSeq ORF:	3333
Synonyms:	HBEBP3; HBEBP36; KIBRA; MEMRYQTL; PPP1R168
Summary:	The protein encoded by this gene is a cytoplasmic phosphoprotein that interacts with PRKC-zeta and dynein light chain-1. Alleles of this gene have been found that enhance memory in some individuals. Three transcript variants encoding different isoforms have been found for this gene. [provided by RefSeq, Mar 2010]

Product images:



Coomassie blue staining of purified WWC1 protein (Cat# [TP314592]). The protein was produced from HEK293T cells transfected with WWC1 cDNA clone (Cat# [RC214592]) using MegaTran 2.0 (Cat# [TT210002]).