

Product datasheet for **TP314592L**

KIBRA (WWC1) (NM_015238) Human Recombinant Protein

Product data:

Product Type: Recombinant Proteins
Description: Recombinant protein of human WW and C2 domain containing 1 (WWC1), 1 mg
Species: Human
Expression Host: HEK293T
Expression cDNA Clone or AA Sequence: >RC214592 representing NM_015238
Red=Cloning site **Green**=Tags(s)

MPRPELPLPEGWEEARDFDGKVYYIDHTNRTTSWIDPRDRYTKPLTFADCISDELPLGWEEAYDPQVG DY
FIDHNTKTTQIEDPRVQWRREQEHMLKDYLVWAQEALSAQKEIYQVKQRLELAQQEYQQLHAVWEHKL G
SQVSLVSGSSSSSKYDPEILKAEIATAKSRVNKLKREMVHLQHELQFKERGFQTLKKIDKKMSDAQGSYK
LDEAQA VLRETKAIKKAITCGEKEKQDLIKSLAMLKDGFRTRDRGSHSDLWSSSSSLESSSFP LPKQYLDV
SSQTDISGSGFINSNNQLAEKVRLRLRYEEAKRRIANLKIQLAKLDSEAWPGVLDSEDRDLILINEKEEL
LKEMRFISPRKWTQGEVEQLEMARKRLEKDLQAARDTQSKALTERLKLNSKRNQLVRELEEATRQVATLH
SQLKSLSSSMQSLSSGSSPGSLTSSRGSLVASSLDSSTSASFDTLYDDPFEQLDSELQSKVEFLLLEGAT
GFRPSGCITTIHEDEVAKTQKAEGGGRLQALRSLSGTPKSMTSLSPRSSLSSPSPPCSPLMADPLLAGDA
FLNSLEFEDPELSATLCELSLGN SAQERYLEEPGTEGKQLGQAVNTAQGCGLKVACVSA AVSDESVA GD
SGVYEASVQRLGASEAAAFDSDESEAVGATRIQIALKYDEKNKQFAILI IQLSNLSALLQQDQKV NIRV
AVLPCSESTTCLFRTRPLDASDTL VFNEVFWWSMSYPALH QKTLRVDVCTTDRSHLEECLGGAQISLAEV
CRSGERSTRWYNLLSYKYLKQSR ELKPVGVMAPASGPASTDAVSALLEQTAVELEK RQEGRSSTQTLED
SWRYEETSENEAVAE EEEEEVEEEGEEDVFTEKASPDMDGYPALKVDKETNTETPAPSPTVVRPKDRR VG
TPSQGPFLRGSTIIRSKTFSPGPQSQYVCRLNRSDSDSSTLSKKPPFVRNSLERRSVRMKRPSSVKSLRS
ERLIRTSLDLELDLQATRTWHSQLTQEISVLKELKEQLEQAKSHGEKELPQWLREDERFRLLLRLMLEKRM
DRAEHKGELQTDKMMRAAAKD VHRLRGQSCKEPPEVQSFREKMAFFTRPRMNIPALSADDV

TRTRPLEQKLISEEDLAANDILDYKDDDDKV

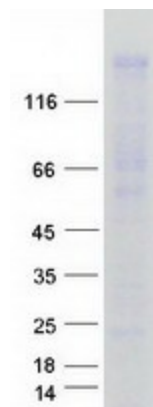
Tag: C-Myc/DDK
Predicted MW: 125.1 kDa
Concentration: >0.05 µg/µL as determined by microplate BCA method
Purity: > 80% as determined by SDS-PAGE and Coomassie blue staining
Buffer: 25 mM Tris-HCl, 100 mM glycine, pH 7.3, 10% glycerol



[View online »](#)

Preparation:	Recombinant protein was captured through anti-DDK affinity column followed by conventional chromatography steps.
Note:	For testing in cell culture applications, please filter before use. Note that you may experience some loss of protein during the filtration process.
Storage:	Store at -80°C.
Stability:	Stable for 12 months from the date of receipt of the product under proper storage and handling conditions. Avoid repeated freeze-thaw cycles.
RefSeq:	NP_056053
Locus ID:	23286
UniProt ID:	Q8IX03
RefSeq Size:	4171
Cytogenetics:	5q34
RefSeq ORF:	3333
Synonyms:	HBEBP3; HBEBP36; KIBRA; MEMRYQTL; PPP1R168
Summary:	The protein encoded by this gene is a cytoplasmic phosphoprotein that interacts with PRKC-zeta and dynein light chain-1. Alleles of this gene have been found that enhance memory in some individuals. Three transcript variants encoding different isoforms have been found for this gene. [provided by RefSeq, Mar 2010]

Product images:



Coomassie blue staining of purified WWC1 protein (Cat# [TP314592]). The protein was produced from HEK293T cells transfected with WWC1 cDNA clone (Cat# [RC214592]) using MegaTran 2.0 (Cat# [TT210002]).