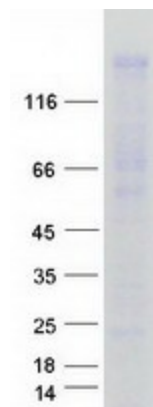




<b>Preparation:</b>	Recombinant protein was captured through anti-DDK affinity column followed by conventional chromatography steps.
<b>Note:</b>	For testing in cell culture applications, please filter before use. Note that you may experience some loss of protein during the filtration process.
<b>Storage:</b>	Store at -80°C.
<b>Stability:</b>	Stable for 12 months from the date of receipt of the product under proper storage and handling conditions. Avoid repeated freeze-thaw cycles.
<b>RefSeq:</b>	<a href="#">NP_056053</a>
<b>Locus ID:</b>	23286
<b>UniProt ID:</b>	<a href="#">Q8IX03</a>
<b>RefSeq Size:</b>	4171
<b>Cytogenetics:</b>	5q34
<b>RefSeq ORF:</b>	3333
<b>Synonyms:</b>	HBEBP3; HBEBP36; KIBRA; MEMRYQTL; PPP1R168
<b>Summary:</b>	The protein encoded by this gene is a cytoplasmic phosphoprotein that interacts with PRKC-zeta and dynein light chain-1. Alleles of this gene have been found that enhance memory in some individuals. Three transcript variants encoding different isoforms have been found for this gene. [provided by RefSeq, Mar 2010]

### Product images:



Coomassie blue staining of purified WWC1 protein (Cat# TP314592). The protein was produced from HEK293T cells transfected with WWC1 cDNA clone (Cat# [RC214592]) using MegaTran 2.0 (Cat# [TT210002]).