

Product datasheet for TP314584L

WDR36 (NM_139281) Human Recombinant Protein

Product data:

Product Type:	Recombinant Proteins
Description:	Recombinant protein of human WD repeat domain 36 (WDR36), 1 mg
Species:	Human
Expression Host:	HEK293T
Expression cDNA Clone or AA Sequence:	>RC214584 protein sequence Red=Cloning site Green=Tags(s)

MCCTEGSLRKRDSQRAPEAVLCLQLWQRTVPLDTLKG LGTGFPSGPELRGAGIAAAMERASERTASALF
AGFRALGLFSNDIPHVVRFSAKRRFYVTTCVGKSFHTYDVQKLSLVAVSNSVPODICCMAADGRLVFAA
YGNVFSAFARNKEIVHTFKGHKAEIHFLQPFGDHII SVDTDGILIIWHIYSEEEYLQLTFDKSVFKISAI
LHPSTYLNKILLGSEQGSLQLWNVKSNKLLYTFPGWKVGV TALQQAPAVDVVAIGLMSGQVIIHNIK FNE
TLMKFRQDWGPITSISFRTDGHPVMAAGSPCGHIGLW DLEDKKLINQMRNAHSTAIAGLTF LHREPLLVT
NGADNALRIWIFDGPTGEGRLLRFRMGHSAPLTNIRYYGQNGQQILSASQDGT LQSFSTVHEKFNKSLGH
GLINKKRVKRKGLQNTMSVRLPPITKFAAEEA RESDWDGIIACHQGKLS CSTWNYQKSTIGAYFLKPKEL
KKDDITATAVDITSCGNFAVIGLSSGTVDVY NMQSGIHRGSFGKDQAHKGSVRGVAVDGLNQLT VTTGSE
GLLKFWNFKNKILHSVLS SSPNIMLLHRDSGILGLALDDFSISVLDIETR KIVREFSGHQGGQINDMAF
SPDGRWLISAAMD CSIRTWDLPSGCLIDCFLLDSAPLNVSMSPTGDFLATSHVDHLGIYLW SNISLYSVV
SLRPLPADYVPSIVMLPGTCTQDVEVSEETVEPSDELIEYDSPEQLNEQLV TLLPESRWKNLLNLDV
IKKKNPKPEPPKVPKSAPFFIPTIPGLVPRYAAPEQNNDPQQSKV VNLGVLAQKSDFLKLEEGLVN NKY
DTALNLLKESGPSGIETELRSLSPDCGGSIEVMQSFLKMIGMMLDRKRFELAQAYLALFLKLHLKMLPS
EPVLLLEEITNLSSQVEENWTHLQSLFNQSMCILNYLKSALL

TRTRPLEQKLISEEDLAANDILDYKDDDDKV

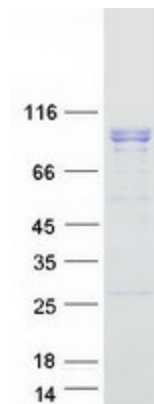
Tag:	C-Myc/DDK
Predicted MW:	105.1 kDa
Concentration:	>0.05 µg/µL as determined by microplate BCA method
Purity:	> 80% as determined by SDS-PAGE and Coomassie blue staining
Buffer:	25 mM Tris-HCl, 100 mM glycine, pH 7.3, 10% glycerol
Preparation:	Recombinant protein was captured through anti-DDK affinity column followed by conventional chromatography steps.



[View online »](#)

Note:	For testing in cell culture applications, please filter before use. Note that you may experience some loss of protein during the filtration process.
Storage:	Store at -80°C.
Stability:	Stable for 12 months from the date of receipt of the product under proper storage and handling conditions. Avoid repeated freeze-thaw cycles.
RefSeq:	NP_644810
Locus ID:	134430
UniProt ID:	Q8NI36
RefSeq Size:	6611
Cytogenetics:	5q22.1
RefSeq ORF:	2853
Synonyms:	GLC1G; TA-WDRP; TAWDRP; UTP21
Summary:	This gene encodes a member of the WD repeat protein family. WD repeats are minimally conserved regions of approximately 40 amino acids typically bracketed by gly-his and trp-asp (GH-WD), which may facilitate formation of heterotrimeric or multiprotein complexes. Members of this family are involved in a variety of cellular processes, including cell cycle progression, signal transduction, apoptosis, and gene regulation. Mutations in this gene have been associated with adult-onset primary open-angle glaucoma (POAG). [provided by RefSeq, Jul 2008]

Product images:



Coomassie blue staining of purified WDR36 protein (Cat# [TP314584]). The protein was produced from HEK293T cells transfected with WDR36 cDNA clone (Cat# [RC214584]) using MegaTran 2.0 (Cat# [TT210002]).