

## Product datasheet for **TP314569M**

### GRK1 (NM\_002929) Human Recombinant Protein

#### Product data:

**Product Type:** Recombinant Proteins  
**Description:** Recombinant protein of human G protein-coupled receptor kinase 1 (GRK1), 100 µg  
**Species:** Human  
**Expression Host:** HEK293T  
**Expression cDNA Clone or AA Sequence:** >RC214569 representing NM\_002929  
**Red**=Cloning site **Green**=Tags(s)

MDFGSLETWANSAFIAARGSFDFGSSSQPSRDKKYLAKLKLPLSKCESLRDLSLEFESVCLEQPIGKK  
LFQQFLQSAEKHLPALWLDIEDYDTADNDLQPQKAQTILAQYLDPAKLFCSFLDEGIVAKFKEGPVE  
IQDGLFQPLLQATLAHLGQAPFQEYLGSLYFLRFLQWKWLEAQPMPGEDWFLDFRVLGKGGFGEVSACQMK  
ATGKLYACKKLNKKRLKRRKGYQGAMVEKKILMKVHSRFLVSLAYAFETKADLCLVMTIMNGGDIRYHIY  
NVNEENPGFPEPRALFYTAQIICGLEHLHQRRIVYRDLKPEENVLLDNDGNVRISDLGLAVELLDGQSKTK  
GYAGTPGFMAPELLQGEEYDFSVDYFALGVTLYEMIAARGPFRARGEKVENKELKHRIIEPVKYPDKFS  
QASKDFCEALLEKDPEKRLGFRDETCDKLRAHPLFKDLNWRQLEAGMLMPPFIPDSKTVYAKDIQDVGAF  
STVKGVAFDKTDEFFQEFATGNCPWPQEEMIETGIFGELNVWRSDGQMPDDMKGISGSSSSSSKSGMC  
LVS

**TRTRPLEQKLISEEDLAANDILDYKDDDDKV**

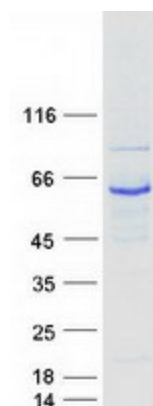
**Tag:** C-Myc/DDK  
**Predicted MW:** 63.3 kDa  
**Concentration:** >0.05 µg/µL as determined by microplate BCA method  
**Purity:** > 80% as determined by SDS-PAGE and Coomassie blue staining  
**Buffer:** 25 mM Tris-HCl, 100 mM glycine, pH 7.3, 10% glycerol  
**Preparation:** Recombinant protein was captured through anti-DDK affinity column followed by conventional chromatography steps.  
**Note:** For testing in cell culture applications, please filter before use. Note that you may experience some loss of protein during the filtration process.  
**Storage:** Store at -80°C.



[View online »](#)

<b>Stability:</b>	Stable for 12 months from the date of receipt of the product under proper storage and handling conditions. Avoid repeated freeze-thaw cycles.
<b>RefSeq:</b>	<a href="#">NP_002920</a>
<b>Locus ID:</b>	6011
<b>UniProt ID:</b>	<a href="#">Q15835</a>
<b>RefSeq Size:</b>	2100
<b>Cytogenetics:</b>	13q34
<b>RefSeq ORF:</b>	1689
<b>Synonyms:</b>	GPRK1; RHOK; RK
<b>Summary:</b>	This gene encodes a member of the guanine nucleotide-binding protein (G protein)-coupled receptor kinase subfamily of the Ser/Thr protein kinase family. The protein phosphorylates rhodopsin and initiates its deactivation. Defects in GRK1 are known to cause Oguchi disease 2 (also known as stationary night blindness Oguchi type-2). [provided by RefSeq, Jul 2008]
<b>Protein Families:</b>	Druggable Genome, Protein Kinase
<b>Protein Pathways:</b>	Chemokine signaling pathway, Endocytosis

### Product images:



Coomassie blue staining of purified GRK1 protein (Cat# [TP314569]). The protein was produced from HEK293T cells transfected with GRK1 cDNA clone (Cat# [RC214569]) using MegaTran 2.0 (Cat# [TT210002]).