

Product datasheet for **TP314563M**

Calpain 12 (CAPN12) (NM_144691) Human Recombinant Protein

Product data:

Product Type: Recombinant Proteins

Description: Recombinant protein of human calpain 12 (CAPN12), 100 µg

Species: Human

Expression Host: HEK293T

Expression cDNA >RC214563 representing NM_144691

Clone or AA Red=Cloning site Green=Tags(s)

Sequence:

MASSSGRVTIQLVDEEAGVGAGRLQLFRGQSYEAIRAAACLD SGILFRDPYFPAGPDALGYDQLGPDSEKA
KGVKWMRPHEFCAEPKFCEDMSRTDVCQGS LGNCWFLAAAASLTLYPRLLRRVPPGQDFQHGYAGVFH
FQLWQFGRWMDVWDDRLPVREGKLMFVRSEQRNEFWAPLLEKAYAKLHGSYEV MRGGHMNEAFVDFTGG
VGEVLYLRQNSMGLFSALRHAKESLVGATASDRGEYRTEEGLVKGHAYSITGTHKVFLGFTKVRLLR
LRNPWGCVEWTGAWS DSCRWDTLPTTECRDALLVKKEDGEFWMELRDFLLHFDTVQICSLSPEVLGSPSE
GGGWHVHTFQGRWVRGFNSGGSQPNAETFWTNPQFRLTLEPDEEDDEDEEGPWGGWGAAGARGPARGGR
TPKCTVLLSLIQRNRRRLRAKGLTYLTVGFHVFIPEELLGLWDS PRSHALLPRLLRADRSP LSARRDVT
RRCCLRPGHYLVVPSTAHAGDEADFTLRVFSERRHTAVEID DVISADLQSLQGPYLPLELGLQLFQELA
GEEELNASQLQALLSIALEPARAHTSTPREIGLRTCEQLLQCFGHGQSLALH HFQQLWGYLLEWQAIFN
KFDEDTSGTMNSYELRLALNAAGFHLNQLTQTLTSRYRDSRLRVDFERFVSCVAHLTCIFCHCSQHLDG
GEGVICLTHRQWMEVATFS

SGPTRTRRLEQKLISEEDLAANDILDYKDDDDKV

Tag: C-Myc/DDK

Predicted MW: 80.9 kDa

Concentration: >0.05 µg/µL as determined by microplate BCA method

Purity: > 80% as determined by SDS-PAGE and Coomassie blue staining

Buffer: 25 mM Tris-HCl, 100 mM glycine, pH 7.3, 10% glycerol

Preparation: Recombinant protein was captured through anti-DDK affinity column followed by conventional chromatography steps.

Note: For testing in cell culture applications, please filter before use. Note that you may experience some loss of protein during the filtration process.

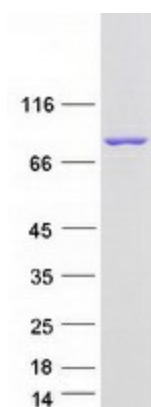
Storage: Store at -80°C.



[View online >](#)

Stability:	Stable for 12 months from the date of receipt of the product under proper storage and handling conditions. Avoid repeated freeze-thaw cycles.
RefSeq:	NP_653292
Locus ID:	147968
UniProt ID:	Q6ZSI9
RefSeq Size:	3129
Cytogenetics:	19q13.2
RefSeq ORF:	2157
Summary:	The calpains, calcium-activated neutral proteases, are nonlysosomal, intracellular cysteine proteases. The mammalian calpains include ubiquitous, stomach-specific, and muscle-specific proteins. The ubiquitous enzymes consist of heterodimers with distinct large, catalytic subunits associated with a common small, regulatory subunit. This gene encodes a member of the calpain large subunit family. [provided by RefSeq, Jun 2012]
Protein Families:	Druggable Genome

Product images:



Coomassie blue staining of purified CAPN12 protein (Cat# [TP314563]). The protein was produced from HEK293T cells transfected with CAPN12 cDNA clone (Cat# [RC214563]) using MegaTran 2.0 (Cat# [TT210002]).