

Product datasheet for TP314563

Calpain 12 (CAPN12) (NM_144691) Human Recombinant Protein

Product data:

Product Type:	Recombinant Proteins
Description:	Recombinant protein of human calpain 12 (CAPN12), 20 µg
Species:	Human
Expression Host:	HEK293T
Expression cDNA Clone or AA Sequence:	>RC214563 representing NM_144691 Red=Cloning site Green=Tags(s)

MASSSGRVTIQLVDEEAGVGAGRLQLFRGQSYEAIRAAACLDGILFRDPYFPAGPDALGYDQLGPDSEKA
KGVKWMRPHEFCAEPKFCEDMSRTDVCQGS LGNCWFLAAAASLTLYPRLLRRVPPGQDFQHGYAGVFH
FQLWQFGRWMDVWDDRLPVREGKLMFVRSEQRNEFWAPLLEKAYAKLHGSYEVMRGGHMNEAFVDFTGG
VGEVLYLRQNSMGLFSALRHAKESLVGATASDRGEYRTEEGLVKGHAYSITGTHKVFLGFTKVRLLR
LRNPWGCVEWTGAWS DSCRWDTLPTTECRDALLVKKEDGEFWMELRDFLLHFDTVQICSLSPEVLGSPSE
GGGWHVHTFQGRWVRGFNSGGSQPNAETFWTNPQFRLTLEPDEEDEDEEGPWGGWGAAGARGPARGGR
TPKCTVLLSLIQRNRRRLRAKGLTYLTVGFHVFIPEELLGLWDSRSHALLPRLLRADRSPLSARRDVT
RRCCLRPGHYLVVPSTAHAGDEADFTLRVFSERRHTAVEIDDIVSADLQSLQGPYLPLELGLQLFQELA
GEEELNASQLQALLSIALEPARAHTSTPREIGLRTCEQLLQCFGHGQSLALHFFQQLWGYLLEWQAIFN
KFDEDTSGTMNSYELRLALNAAGFHLNQLTQTLTSRYRDSRLRVDFERFVSCVAHLTCIFCHCSQHLDG
GEGVICLTHRQWMEVATFS

SGPTRRRLEQKLISEEDLAANDILDYKDDDDKV

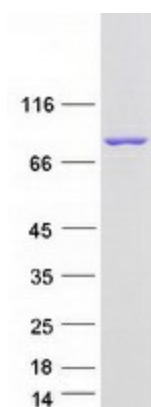
Tag:	C-Myc/DDK
Predicted MW:	80.9 kDa
Concentration:	>0.05 µg/µL as determined by microplate BCA method
Purity:	> 80% as determined by SDS-PAGE and Coomassie blue staining
Buffer:	25 mM Tris-HCl, 100 mM glycine, pH 7.3, 10% glycerol
Preparation:	Recombinant protein was captured through anti-DDK affinity column followed by conventional chromatography steps.
Note:	For testing in cell culture applications, please filter before use. Note that you may experience some loss of protein during the filtration process.
Storage:	Store at -80°C.



[View online »](#)

Stability:	Stable for 12 months from the date of receipt of the product under proper storage and handling conditions. Avoid repeated freeze-thaw cycles.
RefSeq:	NP_653292
Locus ID:	147968
UniProt ID:	Q6ZSI9
RefSeq Size:	3129
Cytogenetics:	19q13.2
RefSeq ORF:	2157
Summary:	The calpains, calcium-activated neutral proteases, are nonlysosomal, intracellular cysteine proteases. The mammalian calpains include ubiquitous, stomach-specific, and muscle-specific proteins. The ubiquitous enzymes consist of heterodimers with distinct large, catalytic subunits associated with a common small, regulatory subunit. This gene encodes a member of the calpain large subunit family. [provided by RefSeq, Jun 2012]
Protein Families:	Druggable Genome

Product images:



Coomassie blue staining of purified CAPN12 protein (Cat# TP314563). The protein was produced from HEK293T cells transfected with CAPN12 cDNA clone (Cat# [RC214563]) using MegaTran 2.0 (Cat# [TT210002]).