

## Product datasheet for TP314546

### NPL (NM\_030769) Human Recombinant Protein

#### Product data:

Product Type:	Recombinant Proteins
Description:	Recombinant protein of human N-acetylneuraminase pyruvate lyase (dihydrodipicolinate synthase) (NPL), 20 µg
Species:	Human
Expression Host:	HEK293T
Expression cDNA Clone or AA Sequence:	>RC214546 protein sequence Red=Cloning site Green=Tags(s)

MAFPKKKLQGLVAATITPMTENGEINFSVIGQYVDYLVKEQGVKNIFVNGTTGEGLSLSVSERRQVAEEW  
VTKGDKLDQVIIHVGALSCLKESQELAQHAAEIGADGIAVIAPFFLKPWTKDILINFLKEVAAAAPALPF  
YYYHIPALTGVKIRAEELLDGILDKIPTFQGLKFSDTDLLDFGQCVDQNRQQQFAFLFGVDEQLLSALVM  
GATGAVGSTYNYLGKKTNQMLEAFEQKDFSLALNYQFCIQRFINFWVKLGFGVSQTKAIMTLVSGIPMGP  
PRLPLQKASREFTDSAEAKLKSDFLSFTDLKDG NLEAGS

TRTRPLEQKLISEEDLAANDILDYKDDDDKV

Tag:	C-Myc/DDK
Predicted MW:	35 kDa
Concentration:	>0.05 µg/µL as determined by microplate BCA method
Purity:	> 80% as determined by SDS-PAGE and Coomassie blue staining
Buffer:	25 mM Tris-HCl, 100 mM glycine, pH 7.3, 10% glycerol
Preparation:	Recombinant protein was captured through anti-DDK affinity column followed by conventional chromatography steps.
Note:	For testing in cell culture applications, please filter before use. Note that you may experience some loss of protein during the filtration process.
Storage:	Store at -80°C.
Stability:	Stable for 12 months from the date of receipt of the product under proper storage and handling conditions. Avoid repeated freeze-thaw cycles.
RefSeq:	<a href="#">NP_110396</a>
Locus ID:	80896



[View online »](#)

UniProt ID: [Q9BXD5](#)

RefSeq Size: 2867

Cytogenetics: 1q25.3

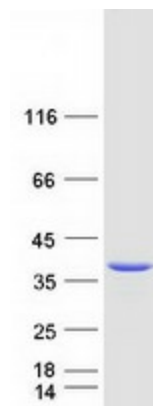
RefSeq ORF: 960

Synonyms: C1orf13; C112; NAL; NPL1

**Summary:** This gene encodes a member of the N-acetylneuraminase lyase sub-family of (beta/alpha)(8)-barrel enzymes. N-acetylneuraminase lyases regulate cellular concentrations of N-acetylneuraminic acid (sialic acid) by mediating the reversible conversion of sialic acid into N-acetylmannosamine and pyruvate. A pseudogene of this gene is located on the short arm of chromosome 2. Alternatively spliced transcript variants encoding multiple isoforms have been observed for this gene. [provided by RefSeq, Jan 2011]

**Protein Pathways:** Amino sugar and nucleotide sugar metabolism

### Product images:



Coomassie blue staining of purified NPL protein (Cat# TP314546). The protein was produced from HEK293T cells transfected with NPL cDNA clone (Cat# [RC214546]) using MegaTran 2.0 (Cat# [TT210002]).