

Product datasheet for **TP314515M**

RBP1 (NM_002899) Human Recombinant Protein

Product data:

Product Type:	Recombinant Proteins
Description:	Recombinant protein of human retinol binding protein 1, cellular (RBP1), transcript variant 1, 100 µg
Species:	Human
Expression Host:	HEK293T
Expression cDNA Clone or AA Sequence:	>RC214515 representing NM_002899 Red =Cloning site Green =Tags(s) MPVDFTGYWKMLVNFEEYLRALDVNVALRKIANLLKPDKEIVQGDHMIIRTLSTFRNYIMDFQVGKE FEEDLTGIDDRKCMTTVSWDGDQLQCVQKGEKEGRGWTQWIEGDELHLEMRVEGVVCKQVFKKVQ TRTRPLEQKLISEEDLAANDILDYKDDDDKV
Tag:	C-Myc/DDK
Predicted MW:	15.7 kDa
Concentration:	>0.05 µg/µL as determined by microplate BCA method
Purity:	> 80% as determined by SDS-PAGE and Coomassie blue staining
Buffer:	25 mM Tris-HCl, 100 mM glycine, pH 7.3, 10% glycerol
Bioactivity:	Enzyme activity regulator (PMID: 25502770)
Preparation:	Recombinant protein was captured through anti-DDK affinity column followed by conventional chromatography steps.
Note:	For testing in cell culture applications, please filter before use. Note that you may experience some loss of protein during the filtration process.
Storage:	Store at -80°C.
Stability:	Stable for 12 months from the date of receipt of the product under proper storage and handling conditions. Avoid repeated freeze-thaw cycles.
RefSeq:	NP_002890
Locus ID:	5947
UniProt ID:	P09455 , A0A0A0MQT0

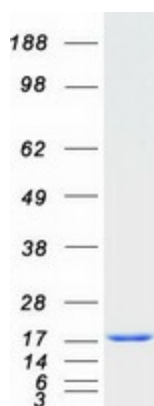


[View online »](#)

RefSeq Size:	720
Cytogenetics:	3q23
RefSeq ORF:	405
Synonyms:	CRABP-I; CRBP; CRBP1; CRBPI; RBPC

Summary: This gene encodes the carrier protein involved in the transport of retinol (vitamin A alcohol) from the liver storage site to peripheral tissue. Vitamin A is a fat-soluble vitamin necessary for growth, reproduction, differentiation of epithelial tissues, and vision. Multiple transcript variants encoding different isoforms have been found for this gene. [provided by RefSeq, Aug 2008]

Product images:



Coomassie blue staining of purified RBP1 protein (Cat# [TP314515]). The protein was produced from HEK293T cells transfected with RBP1 cDNA clone (Cat# [RC214515]) using MegaTran 2.0 (Cat# [TT210002]).