

Product datasheet for **TP314498**

GRHL2 (NM_024915) Human Recombinant Protein

Product data:

Product Type:	Recombinant Proteins
Description:	Recombinant protein of human grainyhead-like 2 (Drosophila) (GRHL2), 20 µg
Species:	Human
Expression Host:	HEK293T
Expression cDNA Clone or AA Sequence:	>RC214498 representing NM_024915 Red =Cloning site Green =Tags(s)

MSQESDNNKRLVALVPMPSPDPFNTRRAYTSEDEAWKSYLENPLTAATKAMMSINGDEDSAAALGLLYDY
YKVPRDKRLLSVSKASDSQEDQEKRNCLGTSEAQSNLSGGENRVQVLKTPVNLNLDHLENSKREQYS
ISFPESAIIPVSGITVKAEDFTPVFMAPPVHYPRGDGEEQRVWIFEQTQYDVPSLATHSAYLKDDQRS
TPDSTYSEFKDAATEKFRSASVGAEEYMYDQTSSGTFQYTLKSLRQKQGEPMYLNKGGQFYAITL
SETGDNKCFRHPISKVRSVVMVVFSEDKNRDEQLKYWKYWHSRQHTAKQRLDIADYKESFNTIGNIEEI
AYNAVSFTWDVNNEAKIFITVNCLSTDFSSQKGVKGLPLMIQIDTYSYNNRSNKPIHRAYCQIKVFCDKG
AERKIRDEERKQNRKKGKQASQTQCNSSSDGKLAAPLQKKS DITYFKTMPDLHSQPVLFPDVHFANL
QRTGQVYYNTDDEREGSVLVKRMFRPMEEFGVPVSKQMKEEGTKRVLVYRKETDDVDFDALMLKSPV
KGLMEAISEKYGLPVEKIAKLYKSKKGLVNMDDNIIHYSNEDTFILNMESMVEGFKVTLMEI

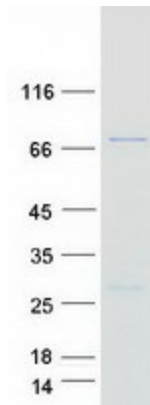
TRTRPLEQKLISEEDLAANDILDYKDDDDKV

Tag:	C-Myc/DDK
Predicted MW:	70.9 kDa
Concentration:	>0.05 µg/µL as determined by microplate BCA method
Purity:	> 80% as determined by SDS-PAGE and Coomassie blue staining
Buffer:	25 mM Tris-HCl, 100 mM glycine, pH 7.3, 10% glycerol
Preparation:	Recombinant protein was captured through anti-DDK affinity column followed by conventional chromatography steps.
Note:	For testing in cell culture applications, please filter before use. Note that you may experience some loss of protein during the filtration process.
Storage:	Store at -80°C.



[View online »](#)

Stability:	Stable for 12 months from the date of receipt of the product under proper storage and handling conditions. Avoid repeated freeze-thaw cycles.
RefSeq:	NP_079191
Locus ID:	79977
UniProt ID:	Q6ISB3
RefSeq Size:	4793
Cytogenetics:	8q22.3
RefSeq ORF:	1875
Synonyms:	BOM; DFNA28; ECTDS; PPCD4; TFCP2L3
Summary:	The protein encoded by this gene is a transcription factor that can act as a homodimer or as a heterodimer with either GRHL1 or GRHL3. Defects in this gene are a cause of non-syndromic sensorineural deafness autosomal dominant type 28 (DFNA28).[provided by RefSeq, Mar 2009]
Protein Families:	Transcription Factors

Product images:

Coomassie blue staining of purified GRHL2 protein (Cat# TP314498). The protein was produced from HEK293T cells transfected with GRHL2 cDNA clone (Cat# [RC214498]) using MegaTran 2.0 (Cat# [TT210002]).