

## Product datasheet for **TP314480**

### TCP1 delta (CCT4) (NM\_006430) Human Recombinant Protein

#### Product data:

Product Type:	Recombinant Proteins
Description:	Recombinant protein of human chaperonin containing TCP1, subunit 4 (delta) (CCT4), 20 µg
Species:	Human
Expression Host:	HEK293T
Expression cDNA Clone or AA Sequence:	>RC214480 representing NM_006430 <b>Red</b> =Cloning site <b>Green</b> =Tags(s)

MPENVAPRSGATAGAAGGRGKAYQDRDKPAQIRFSNISAACAVADAIRTSGLPKGMDKMIQDGKGDVTI  
TNDGATILKQMQLVHPAARMLVELSKAQDIEAGDGTTSVVIAGSLLDSTCKLLQKGIHPTIISESFQKA  
LEKGIEILTDMSPVELSDRELLNSATSLNSKVVSQYSSLLSPMSVNAVMMKVIDPATATSVDLRDIKI  
VKKLGGTIDDCELVEGLVLTQKVSNSGITRVEKAKIGLIQFCLSAPKTDMDNQIVSDYAQMMDRVLREER  
AYILNLVKQIKKTGCNVLLIQSILRDALSDLAHFLNKMIMVIKDIEREDIEFICKTIGTKPVAHIDQ  
FTADMLGSAELAEVNLNGSGKLLKITGCASPGKTVTIVVRGSNKLVIIEEAERSIHDALCVIRCLVKKRA  
LIAGGGAPEIELARLRLTEYSRTLSGMESYCVRAFADAMEVIPSTLAENAGLNPISTVTELRNRHAQGEKT  
AGINVRKGGISNILEELVVQPLLVSVALTLATETVRSILKIDDDVNTN

**TRTRPLEQKLISEEDLAANDILDYKDDDDKV**

Tag:	C-Myc/DDK
Predicted MW:	57.7 kDa
Concentration:	>0.05 µg/µL as determined by microplate BCA method
Purity:	> 80% as determined by SDS-PAGE and Coomassie blue staining
Buffer:	25 mM Tris-HCl, 100 mM glycine, pH 7.3, 10% glycerol
Preparation:	Recombinant protein was captured through anti-DDK affinity column followed by conventional chromatography steps.
Note:	For testing in cell culture applications, please filter before use. Note that you may experience some loss of protein during the filtration process.
Storage:	Store at -80°C.
Stability:	Stable for 12 months from the date of receipt of the product under proper storage and handling conditions. Avoid repeated freeze-thaw cycles.



[View online »](#)

RefSeq: [NP\\_006421](#)

Locus ID: 10575

UniProt ID: [P50991](#)

RefSeq Size: 2349

Cytogenetics: 2p15

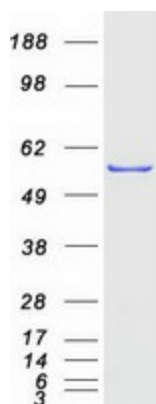
RefSeq ORF: 1617

Synonyms: CCT-DELTA; Cctd; SRB

**Summary:** The chaperonin containing TCP1 (MIM 186980) complex (CCT), also called the TCP1 ring complex, consists of 2 back-to-back rings, each containing 8 unique but homologous subunits, such as CCT4. CCT assists the folding of newly translated polypeptide substrates through multiple rounds of ATP-driven release and rebinding of partially folded intermediate forms. Substrates of CCT include the cytoskeletal proteins actin (see MIM 102560) and tubulin (see MIM 191130), as well as alpha-transducin (MIM 139330) (Won et al., 1998 [PubMed 9819444]). [supplied by OMIM, Mar 2008]

**Protein Families:** Druggable Genome

### Product images:



Coomassie blue staining of purified CCT4 protein (Cat# TP314480). The protein was produced from HEK293T cells transfected with CCT4 cDNA clone (Cat# [RC214480]) using MegaTran 2.0 (Cat# [TT210002]).