

Product datasheet for TP314479

Citrate synthetase (CS) (NM_004077) Human Recombinant Protein

Product data:

Product Type:	Recombinant Proteins
Description:	Recombinant protein of human citrate synthase (CS), nuclear gene encoding mitochondrial protein, 20 µg
Species:	Human
Expression Host:	HEK293T
Expression cDNA Clone or AA Sequence:	>RC214479 representing NM_004077 Red =Cloning site Green =Tags(s)

MALLTAAARLLGTKNASCLVLAARHASASSTNLKDILADLIPKEQARIKTRFQQHGKTWVGQITVDMMYG
GMRGMKGLVYETSVLDPDEGIRFRGFSIPECQKLLPKAKGGEEPLPEGLFWLLVTGHIPTTEQVSWLSKE
WAKRAALPSHVVTMLDNFPTNLHPMSQLSAAVTALNSESNFARAYAQGISRTKYWELIYEDSMDLIAKLP
CVAAKIYRNLYREGSGIGAIDSNLDWSHNFTNMLGYTDHQFTELTRLYLTIHSDHEGGNVSHTSHLVGS
ALSDPYLSFAAAMNGLAGPLHGLANQEVLVWLTQLQKEVGKDVSEKLRDYIWNTLNSGRVVPGYGHAV
L
RKTDPRYTCQREFALKHLPNDPMFKLVAQLYKIVPNVLEQGKAKNPWPNVDAHSGVLLQYYGMTEMN
YY
TVLFGVSRALGVLAQLIWSRALGFPLERPKSMSTEGLMKFVDSKSG

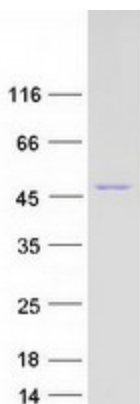
TRTRPLEQKLISEEDLAANDILDYKDDDDKV

Tag:	C-Myc/DDK
Predicted MW:	49 kDa
Concentration:	>0.05 µg/µL as determined by microplate BCA method
Purity:	> 80% as determined by SDS-PAGE and Coomassie blue staining
Buffer:	25 mM Tris-HCl, 100 mM glycine, pH 7.3, 10% glycerol
Preparation:	Recombinant protein was captured through anti-DDK affinity column followed by conventional chromatography steps.
Note:	For testing in cell culture applications, please filter before use. Note that you may experience some loss of protein during the filtration process.
Storage:	Store at -80°C.



[View online »](#)

Stability:	Stable for 12 months from the date of receipt of the product under proper storage and handling conditions. Avoid repeated freeze-thaw cycles.
RefSeq:	NP_004068
Locus ID:	1431
UniProt ID:	O75390
RefSeq Size:	2997
Cytogenetics:	12q13.3
RefSeq ORF:	1398
Summary:	The protein encoded by this gene is a Krebs tricarboxylic acid cycle enzyme that catalyzes the synthesis of citrate from oxaloacetate and acetyl coenzyme A. The enzyme is found in nearly all cells capable of oxidative metabolism. This protein is nuclear encoded and transported into the mitochondrial matrix, where the mature form is found. [provided by RefSeq, Jul 2008]
Protein Pathways:	Citrate cycle (TCA cycle), Glyoxylate and dicarboxylate metabolism, Metabolic pathways

Product images:

Coomassie blue staining of purified CS protein (Cat# TP314479). The protein was produced from HEK293T cells transfected with CS cDNA clone (Cat# [RC214479]) using MegaTran 2.0 (Cat# [TT210002]).