

## Product datasheet for TP314469

### ARTS1 (ERAP1) (NM\_016442) Human Recombinant Protein

#### Product data:

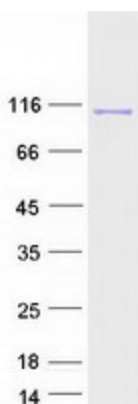
Product Type:	Recombinant Proteins
Description:	Recombinant protein of human endoplasmic reticulum aminopeptidase 1 (ERAP1), transcript variant 1, 20 µg
Species:	Human
Expression Host:	HEK293T
Expression cDNA Clone or AA Sequence:	>RC214469 representing NM_016442 <b>Red</b> =Cloning site <b>Green</b> =Tags(s)
	<p>MVFLPLKWSLATMSFLLSLLALLTVSTPSWCQSTEASPKRSDGTPFPWNKIRLPEYVIPVHYDILLIHAN LTTLTFWGTTKVEITASQPTSTIILHSHHLQISRATLRKGAGERLSEEPLQVLEHPRQEIQIALLAPEPLL VGLPYTVVIHYAGNLSETFHGFYKSTYRTKEGELRILASTQFEPTAARMAFPCFDEPAFKASFSIKIRRE PRHLAISNMLPLVKSVTVAEGLIEDHFDVTVKMSTYLVAFIISDFESVSKITKSGVKVSVYAVPDKINQAD YALDAAVTLLEFYEDYFSIPYPLPKQDLAIPDFQSGAMENWGLTTYRESALLFDAEKSSASSKLGITMT VAHELAHQWFGNLVTMEWWNDLWLNIEGFAKFMFVSVSVTHPELKVGDYFFGKCFDAMEVDALNSSHPVS TPVENPAQIREMFDDVSYDKGACILNMLREYLSADAFKSGIVYQLQKHSYKNTKNEDLWDSMASICPTDG VKGMDGFCRSRQHSSSSSHHWHQEGVDVKTMMNTWTLQKGFPLITIVRGRNVHMKQEHYMKGSDGAPDTG YLWHVPLTFITSKSDMVHRFLLKTKTDVLLPEEVEWIKFNVGMNGYIVHYEDDGWDSLTGLLKGTHTA VSSNDRASLINNAFQLVLSIGKLSIEKALDLSLYLKHETEIMPVFQGLNELIPMYKLMKRDMEVETQFK AFLIRLLRDLIDKQWTWDEGSVSRMLRSQLLLLACVHNYQPCVQRAEGYFRKWKESNGNLSLPVDVTLA VFAVGAQSTEGWDFLYSKYQFSLSSSTEKSQIEFALCRTQNKEKLQWLLDESFKGDKIKTQEFQIILTIG RNPVGYPLAWQFLRKNWNKLVQKFELGSSSIAHMVMGTTNQFSTRTRLEEVKGFSSLKENGSQLRCVQQ TIETIEENIGWMDKNFDKIRVWLQSEKLEHDPEADATG</p> <p><b>TRTRPLEQKLISEEDLAANDILDYKDDDDKV</b></p>
Tag:	C-Myc/DDK
Predicted MW:	107.7 kDa
Concentration:	>0.05 µg/µL as determined by microplate BCA method
Purity:	> 80% as determined by SDS-PAGE and Coomassie blue staining
Buffer:	25 mM Tris-HCl, 100 mM glycine, pH 7.3, 10% glycerol



[View online »](#)

<b>Preparation:</b>	Recombinant protein was captured through anti-DDK affinity column followed by conventional chromatography steps.
<b>Note:</b>	For testing in cell culture applications, please filter before use. Note that you may experience some loss of protein during the filtration process.
<b>Storage:</b>	Store at -80°C.
<b>Stability:</b>	Stable for 12 months from the date of receipt of the product under proper storage and handling conditions. Avoid repeated freeze-thaw cycles.
<b>RefSeq:</b>	<u>NP_057526</u>
<b>Locus ID:</b>	51752
<b>UniProt ID:</b>	<u>Q9NZ08</u>
<b>RefSeq Size:</b>	5584
<b>Cytogenetics:</b>	5q15
<b>RefSeq ORF:</b>	2844
<b>Synonyms:</b>	A-LAP; ALAP; APPILS; ARTS-1; ARTS1; ERAAP; ERAAP1; PILS-AP; PILSAP
<b>Summary:</b>	The protein encoded by this gene is an aminopeptidase involved in trimming HLA class I-binding precursors so that they can be presented on MHC class I molecules. The encoded protein acts as a monomer or as a heterodimer with ERAP2. This protein may also be involved in blood pressure regulation by inactivation of angiotensin II. Three transcript variants encoding two different isoforms have been found for this gene.[provided by RefSeq, Oct 2010]
<b>Protein Families:</b>	Druggable Genome, Protease, Secreted Protein

### Product images:



Coomassie blue staining of purified ERAP1 protein (Cat# TP314469). The protein was produced from HEK293T cells transfected with ERAP1 cDNA clone (Cat# [RC214469]) using MegaTran 2.0 (Cat# [TT210002]).