

## Product datasheet for **TP314451M**

### CYLD (NM\_001042412) Human Recombinant Protein

#### Product data:

**Product Type:** Recombinant Proteins  
**Description:** Recombinant protein of human cylindromatosis (turban tumor syndrome) (CYLD), transcript variant 3, 100 µg  
**Species:** Human  
**Expression Host:** HEK293T  
**Expression cDNA Clone or AA Sequence:** >RC214451 protein sequence  
**Red**=Cloning site **Green**=Tags(s)

MSSGLWSQEKVTSFYWEERIFYLLQECVTDKQTQKLLKVPKGSIGQYIQDRSVGHSRIPSAKGKKNQI  
GLKILEQPHAVLFVDEKDVVEINEKFTELLAITNCEERFSLFKNRNRLSKGLQIDVGCVPVKQLRS  
KFPGVVFRGPLLAERTVSGIFFGVELLEEGRGQGFDTGVYQKQLFQCEDEDCGVFVALDKLELIEDDDT  
ALESYAGPGDTMQVELPPEINRSVSLKVGETIESGTVIFCDVLPKESLGYFVGVDMNDPIGNWDGRF  
DGVQLCSFACVESTILLHINDIIPESVTQERRPPKLAFMSSRGVGDGSSSHNPKATGSTSDPGNRNRSE  
LFYTLNGSSVDSQPQSKSKNTWYIDEVAEDPAKSLTEISTDFDRSSPPLQPPPVSNTTENRFHSLPFSL  
TKMPNTNGSIGHSPLSLSAQSVMEELNTAPVQESPLAMPNGSHGLEVGSLAEVKENPPFYGVIRWIGQ  
PPGLNEVLAGLELEDECACTDGTFRGTRYFTCALKKALFVKLSCRPSRFAFLQPVSNQIERCNSLAF  
GGYLSEWEENTPPKMEKEGLEIMIGKKKGIQGHYNSCYLDSTLFLCLFAFSSVLDTVLLRPKEKNDVEYY  
SETQELLRTEIVNPLRIYGYVCATKIMKLRKILEKVEAASGFTSEEKDPPEFLNLFHHLRVEPLLKIR  
SAGQKVQDCYFYQIFMEKNEKVGVPITQQLLEWSFINSNLKFAEAPSCLIIQMPRFGKDFKLFKKIFPSL  
ELNITDLEDTPRQCRICGGLAMYECRECYDDPDISAGKIKQFCKTCNTQVHLHPKRLNHKYNPVSPLPKD  
LPDWDWRHGCIPCQNMELFAVLCIETSHYVAFVKYKDDSAWLFDDSMADRDGGQNGFNIPQVTPCPEVG  
EYLKMSLEDLHSLDSRRIQGCARRLLCDAYMCMYQSPTMSLYK

**TRTRPLEQKLISEEDLAANDILDYKDDDDKV**

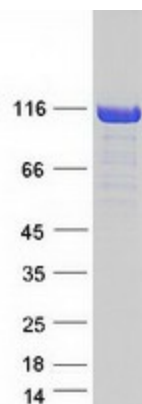
**Tag:** C-Myc/DDK  
**Predicted MW:** 106.9 kDa  
**Concentration:** >0.05 µg/µL as determined by microplate BCA method  
**Purity:** > 80% as determined by SDS-PAGE and Coomassie blue staining  
**Buffer:** 25 mM Tris-HCl, 100 mM glycine, pH 7.3, 10% glycerol



[View online »](#)

<b>Preparation:</b>	Recombinant protein was captured through anti-DDK affinity column followed by conventional chromatography steps.
<b>Note:</b>	For testing in cell culture applications, please filter before use. Note that you may experience some loss of protein during the filtration process.
<b>Storage:</b>	Store at -80°C.
<b>Stability:</b>	Stable for 12 months from the date of receipt of the product under proper storage and handling conditions. Avoid repeated freeze-thaw cycles.
<b>RefSeq:</b>	<a href="#">NP_001035877</a>
<b>Locus ID:</b>	1540
<b>UniProt ID:</b>	<a href="#">Q9NQC7</a> , <a href="#">A0A024R6T1</a>
<b>RefSeq Size:</b>	8608
<b>Cytogenetics:</b>	16q12.1
<b>RefSeq ORF:</b>	2859
<b>Synonyms:</b>	BRSS; CDMT; CYLD1; CYLDI; EAC; FTDALS8; MFT; MFT1; SBS; TEM; USPL2
<b>Summary:</b>	This gene encodes a cytoplasmic protein with three cytoskeletal-associated protein-glycine-conserved (CAP-GLY) domains that functions as a deubiquitinating enzyme. Mutations in this gene have been associated with cylindromatosis, multiple familial trichoepithelioma, and Brooke-Spiegler syndrome. Alternate transcriptional splice variants, encoding different isoforms, have been characterized. [provided by RefSeq, Jul 2008]
<b>Protein Families:</b>	Druggable Genome
<b>Protein Pathways:</b>	RIG-I-like receptor signaling pathway

### Product images:



Coomassie blue staining of purified CYLD protein (Cat# [TP314451]). The protein was produced from HEK293T cells transfected with CYLD cDNA clone (Cat# [RC214451]) using MegaTran 2.0 (Cat# [TT210002]).