

Product datasheet for TP314440L

CTDSPL (NM_005808) Human Recombinant Protein

Product data:

Product Type:	Recombinant Proteins
Description:	Recombinant protein of human CTD (carboxy-terminal domain, RNA polymerase II, polypeptide A) small phosphatase-like (CTDSPL), transcript variant 2, 1 mg
Species:	Human
Expression Host:	HEK293T
Expression cDNA Clone or AA Sequence:	>RC214440 representing NM_005808 Red=Cloning site Green=Tags(s)
	MDGPAITQVTNPKEDEGRPGAGEKASQCNVSLKKQRSRSILSSFFCCFRDYNVEAPPPSSPSVLPPLV EENGGLQKPPAKYLLPEVTVLDYGKKCVIDLDELTVHSSFKPISNADFIVPEIDGTIHQVYVLRPHV DEFLQRMGQLFECVLFASLAKYADPVADLLDRWGVFRARLFRESCVFHRGNVYKDL SRLGRELSKVIIV DN SPASYIFHPENAVPVQSWFDDMTDELLD LIPFFEGLSREDDVYSMLHRLCNR
	TRTRPLEQKLISEEDLAANDILDYKDDDDKV
Tag:	C-Myc/DDK
Predicted MW:	29.8 kDa
Concentration:	>0.05 µg/µL as determined by microplate BCA method
Purity:	> 80% as determined by SDS-PAGE and Coomassie blue staining
Buffer:	25 mM Tris-HCl, 100 mM glycine, pH 7.3, 10% glycerol
Preparation:	Recombinant protein was captured through anti-DDK affinity column followed by conventional chromatography steps.
Note:	For testing in cell culture applications, please filter before use. Note that you may experience some loss of protein during the filtration process.
Storage:	Store at -80°C.
Stability:	Stable for 12 months from the date of receipt of the product under proper storage and handling conditions. Avoid repeated freeze-thaw cycles.
RefSeq:	<u>NP_005799</u>
Locus ID:	10217



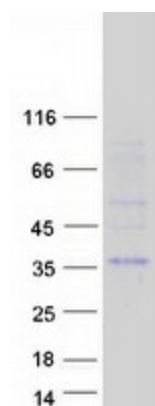
[View online »](#)

UniProt ID: [O15194](#)
RefSeq Size: 4422
Cytogenetics: 3p22.2
RefSeq ORF: 795
Synonyms: C3orf8; HYA22; PSR1; RBSP3; SCP3

Summary: Recruited by REST to neuronal genes that contain RE-1 elements, leading to neuronal gene silencing in non-neuronal cells (By similarity). Preferentially catalyzes the dephosphorylation of 'Ser-5' within the tandem 7 residue repeats in the C-terminal domain (CTD) of the largest RNA polymerase II subunit POLR2A. Negatively regulates RNA polymerase II transcription, possibly by controlling the transition from initiation/capping to processive transcript elongation.[UniProtKB/Swiss-Prot Function]

Protein Families: Druggable Genome, Phosphatase

Product images:



Coomassie blue staining of purified CTDSPL protein (Cat# [TP314440]). The protein was produced from HEK293T cells transfected with CTDSPL cDNA clone (Cat# [RC214440]) using MegaTran 2.0 (Cat# [TT210002]).