

## Product datasheet for **TP314435L**

### Cyclophilin E (PPIE) (NM\_006112) Human Recombinant Protein

#### Product data:

Product Type:	Recombinant Proteins
Description:	Recombinant protein of human peptidylprolyl isomerase E (cyclophilin E) (PPIE), transcript variant 1, 1 mg
Species:	Human
Expression Host:	HEK293T
Expression cDNA Clone or AA Sequence:	>RC214435 protein sequence <b>Red</b> =Cloning site <b>Green</b> =Tags(s)
	MATTKRVLVVGGLAAEEVDDKVLHAAFIPFGDITDIQIPLDYETEKHRGFVFEFELAEDAAAAIDNMNES ELFGRTIRVNLAKPMRIKEGSSRPVWSDDDWLKKFSGKLEENKEEGSEPPKAETQEGEPIAKKARSNP QVYMDIKIGNKPAQRIQMLLRSDVVPMTAENFRCLCTHEKGFKGFSSFHRIIPQFMCQGGDFTNHNGTG GKSIYGKKFDDENFILKHTGPGLLSMANS GPNTNGSQFFLTCDKTDWLDGKHVVFGEVTEGLDVLVRQIEA QGSKDGGKPKQKVIIADCGEYV
	<b>TRTRPLEQKLISEEDLAANDILDYKDDDDKV</b>
Tag:	C-Myc/DDK
Predicted MW:	33.3 kDa
Concentration:	>0.05 µg/µL as determined by microplate BCA method
Purity:	> 80% as determined by SDS-PAGE and Coomassie blue staining
Buffer:	25 mM Tris-HCl, 100 mM glycine, pH 7.3, 10% glycerol
Preparation:	Recombinant protein was captured through anti-DDK affinity column followed by conventional chromatography steps.
Note:	For testing in cell culture applications, please filter before use. Note that you may experience some loss of protein during the filtration process.
Storage:	Store at -80°C.
Stability:	Stable for 12 months from the date of receipt of the product under proper storage and handling conditions. Avoid repeated freeze-thaw cycles.
RefSeq:	<u><a href="#">NP_006103</a></u>
Locus ID:	10450



[View online »](#)

UniProt ID: [Q9UNP9](#)

RefSeq Size: 4392

Cytogenetics: 1p34.2

RefSeq ORF: 903

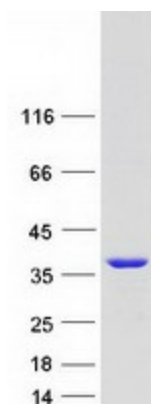
Synonyms: CYP-33; CYP33

**Summary:** The protein encoded by this gene is a member of the peptidyl-prolyl cis-trans isomerase (PPIase) family. PPIases catalyze the cis-trans isomerization of proline imidic peptide bonds in oligopeptides and accelerate the folding of proteins. This protein contains a highly conserved cyclophilin (CYP) domain as well as an RNA-binding domain. It was shown to possess PPIase and protein folding activities, and it also exhibits RNA-binding activity. Alternative splicing results in multiple transcript variants. A related pseudogene, which is also located on chromosome 1, has been identified. [provided by RefSeq, Aug 2010]

**Protein Families:** Transcription Factors

**Protein Pathways:** Spliceosome

### Product images:



Coomassie blue staining of purified PPIE protein (Cat# [TP314435]). The protein was produced from HEK293T cells transfected with PPIE cDNA clone (Cat# [RC214435]) using MegaTran 2.0 (Cat# [TT210002]).