

## Product datasheet for **TP314434M**

### PHOSPHO1 (NM\_178500) Human Recombinant Protein

#### Product data:

**Product Type:** Recombinant Proteins

**Description:** Recombinant protein of human phosphatase, orphan 1 (PHOSPHO1), 100 µg

**Species:** Human

**Expression Host:** HEK293T

**Expression cDNA Clone or AA Sequence:** >RC214434 protein sequence  
**Red**=Cloning site **Green**=Tags(s)

MSGCFPVSGLRCLSRDGRMAAQGAPRFLITFDDETIVDENSDDSVRAAPGQRLPESLRATYREGFYNE  
YMQRVFKYLGEQGVPRDLSAIYEAIPLSPGMSDLLQFVAKQGACFEVILISDANTFGVESSLRAAGHHS  
LFRRILSNPSGPDARGLLALRPFHTHSCARCPANMCKHKVLSYLRERAHGCVHFERLFYVGDGANDFCP  
MGLLAGGDVAFPRRGYPMHRLIQEAQKAEPSSFRASVVPWETAADVRLHLQQVLKSC

**TRTRPLEQKLISEEDLAANDILDYKDDDDKV**

**Tag:** C-Myc/DDK

**Predicted MW:** 29.5 kDa

**Concentration:** >0.05 µg/µL as determined by microplate BCA method

**Purity:** > 80% as determined by SDS-PAGE and Coomassie blue staining

**Buffer:** 25 mM Tris-HCl, 100 mM glycine, pH 7.3, 10% glycerol

**Preparation:** Recombinant protein was captured through anti-DDK affinity column followed by conventional chromatography steps.

**Note:** For testing in cell culture applications, please filter before use. Note that you may experience some loss of protein during the filtration process.

**Storage:** Store at -80°C.

**Stability:** Stable for 12 months from the date of receipt of the product under proper storage and handling conditions. Avoid repeated freeze-thaw cycles.

**RefSeq:** [NP\\_848595](#)

**Locus ID:** 162466

**UniProt ID:** [Q8TCT1](#)



[View online »](#)

RefSeq Size: 2046

Cytogenetics: 17q21.32

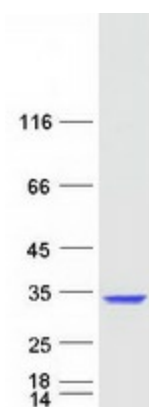
RefSeq ORF: 801

**Summary:** Phosphatase that has a high activity toward phosphoethanolamine (PEA) and phosphocholine (PCho). Involved in the generation of inorganic phosphate for bone mineralization.  
[UniProtKB/Swiss-Prot Function]

**Protein Families:** Druggable Genome

**Protein Pathways:** Glycerophospholipid metabolism

### Product images:



Coomassie blue staining of purified PHOSPHO1 protein (Cat# [TP314434]). The protein was produced from HEK293T cells transfected with PHOSPHO1 cDNA clone (Cat# [RC214434]) using MegaTran 2.0 (Cat# [TT210002]).