

Product datasheet for **TP314434L**

PHOSPHO1 (NM_178500) Human Recombinant Protein

Product data:

Product Type: Recombinant Proteins

Description: Recombinant protein of human phosphatase, orphan 1 (PHOSPHO1), 1 mg

Species: Human

Expression Host: HEK293T

**Expression cDNA Clone
or AA Sequence:** >RC214434 protein sequence
Red=Cloning site **Green**=Tags(s)

MSGCFPVSGLRCLSRDGRMAAQGAPRFLLTDFDETIVDENSDDSVRAAPGQRLPESLRATYREGFYNE
YMQRVFKYLGEQGVPRDL SAIYEAIPLSPGMSDLLQFVAKQGACFEVILISDANTFGVESSLRAAGHHS
LFRRILSNPSGPDARGLLALRPFHTHSCARCPANMCKHKVLS DYLRERAHDGVHFERLFYVGDGANDFCP
MGLLAGGDVAFPRRGYPMHRLIQEAQKAEPSSFRASVVPWETAADVRLHLQQVLKSC

TRTRPLEQKLISEEDLAANDILDYKDDDDKV

Tag: C-Myc/DDK

Predicted MW: 29.5 kDa

Concentration: >0.05 µg/µL as determined by microplate BCA method

Purity: > 80% as determined by SDS-PAGE and Coomassie blue staining

Buffer: 25 mM Tris-HCl, 100 mM glycine, pH 7.3, 10% glycerol

Preparation: Recombinant protein was captured through anti-DDK affinity column followed by conventional chromatography steps.

Note: For testing in cell culture applications, please filter before use. Note that you may experience some loss of protein during the filtration process.

Storage: Store at -80°C.

Stability: Stable for 12 months from the date of receipt of the product under proper storage and handling conditions. Avoid repeated freeze-thaw cycles.

RefSeq: [NP_848595](#)

Locus ID: 162466

UniProt ID: [Q8TCT1](#)



[View online »](#)

RefSeq Size: 2046

Cytogenetics: 17q21.32

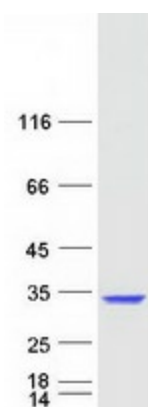
RefSeq ORF: 801

Summary: Phosphatase that has a high activity toward phosphoethanolamine (PEA) and phosphocholine (PCho). Involved in the generation of inorganic phosphate for bone mineralization.
[UniProtKB/Swiss-Prot Function]

Protein Families: Druggable Genome

Protein Pathways: Glycerophospholipid metabolism

Product images:



Coomassie blue staining of purified PHOSPHO1 protein (Cat# [TP314434]). The protein was produced from HEK293T cells transfected with PHOSPHO1 cDNA clone (Cat# [RC214434]) using MegaTran 2.0 (Cat# [TT210002]).