

## Product datasheet for TP314408

### Integrin alpha 4 (ITGA4) (NM\_000885) Human Recombinant Protein

#### Product data:

Product Type:	Recombinant Proteins
Description:	Recombinant protein of human integrin, alpha 4 (antigen CD49D, alpha 4 subunit of VLA-4 receptor) (ITGA4), 20 µg
Species:	Human
Expression Host:	HEK293T
Expression cDNA Clone or AA Sequence:	>RC214408 representing NM_000885 <b>Red</b> =Cloning site <b>Green</b> =Tags(s)

MAWEARREPGPRRAAVRETMVLLLCLGVPTGRPYNVDTESALLYQGPHTLFGYSVLHSHGANRWLLVG  
APTANWLANASVINPGAIYRCRIGKNPGQTCEQLQLGSPNGEPCGKTCLEERDNQWLGVTLSRQPGENG  
IVTCGHRWKNIFYIKNENKLP TG GCGYVPPDLRTELSKRIAPCYQDYVKKFGENFASCQAGISSFYTKDL  
IVMGAPGSSYWTGSLFVYNITTNKYKAFLDKQNQVKFGSYLGYSVGAGHFRSQHTTEVWGAPQHEQIGK  
AYIFSIDEKELNILHEMKGKGLGSYFGASVCAVDLNADGFSDLLVGAPMQSTIREEGRVFVYINSGSGAV  
MNAMETNLVGS DKY AARFGESIVNLGDIDNDGFEDVAIGAPQEDDLQGAIIYNGRADGISSTFSQRIEG  
LQISKLSMFGQSISGQIDADNNGYVDVAVGAFRSDSAVLLRTRPVVIDASLSHPESVNRTKFDCVENG  
WPSVCIDLTLCSYKGEVPGYIVLFYNMSLDVNRKAESPFRFYSSNGTSDVITGSIQVSSREANCRTH  
QAFMRKDVRDILTPIQIEAAYHLGPHVISKRSTEEFPPLQPILQQKKEKDIMKKTINFARFAHENC SAD  
LQVSAKIGFLKPHENKTYLAVGSMKTLMLNVSLFNAGDDAYETTLHVKLPVGLYFIKILEEEKQINCEV  
TDNSGVVQLDCSIGIYVDHLSRIDISFLLDVSSLSRAEEDLSITVHATCENEEEMDNLKHRSRVTAIPL  
KYEKLT VHGFVNPTSFVYGSNDENEPETCMVEKMNLTFHVINTGNSMAPNVSVEIMVPNSFSPQTDKLF  
NILDVQTTTGECHFENYQRVCALEQQKSAMQTLKGIVQFLSKTDKRLLYCIKADPHCLNFLCNFGKMESG  
KEASVHIQLEGRPSILEMDETSALKFEIRATGFPEPNPRVIELNKDENVAHVLLLEGLHHQRPKRYFTIVI  
ISSLLLGLIVLLLISYVMWKAGFFKRQYKSILQEENRRDSWSYINSKSNDD

**TRTRPLEQKLISEEDLAANDILDYKDDDDKV**

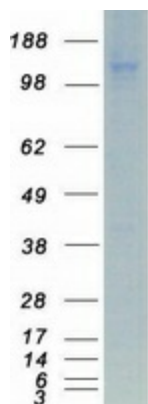
Tag:	C-Myc/DDK
Predicted MW:	111.2 kDa
Concentration:	>0.05 µg/µL as determined by microplate BCA method
Purity:	> 80% as determined by SDS-PAGE and Coomassie blue staining
Buffer:	25 mM Tris-HCl, 100 mM glycine, pH 7.3, 10% glycerol



[View online »](#)

<b>Preparation:</b>	Recombinant protein was captured through anti-DDK affinity column followed by conventional chromatography steps.
<b>Note:</b>	For testing in cell culture applications, please filter before use. Note that you may experience some loss of protein during the filtration process.
<b>Storage:</b>	Store at -80°C.
<b>Stability:</b>	Stable for 12 months from the date of receipt of the product under proper storage and handling conditions. Avoid repeated freeze-thaw cycles.
<b>RefSeq:</b>	<a href="#">NP_000876</a>
<b>Locus ID:</b>	3676
<b>UniProt ID:</b>	<a href="#">P13612</a>
<b>RefSeq Size:</b>	6082
<b>Cytogenetics:</b>	2q31.3
<b>RefSeq ORF:</b>	3096
<b>Synonyms:</b>	CD49D; IA4
<b>Summary:</b>	The gene encodes a member of the integrin alpha chain family of proteins. Integrins are heterodimeric integral membrane proteins composed of an alpha chain and a beta chain that function in cell surface adhesion and signaling. The encoded preproprotein is proteolytically processed to generate light and heavy chains that comprise the alpha 4 subunit. This subunit associates with a beta 1 or beta 7 subunit to form an integrin that may play a role in cell motility and migration. This integrin is a therapeutic target for the treatment of multiple sclerosis, Crohn's disease and inflammatory bowel disease. Alternative splicing results in multiple transcript variants. [provided by RefSeq, Oct 2015]
<b>Protein Families:</b>	Druggable Genome, ES Cell Differentiation/IPS, Transmembrane
<b>Protein Pathways:</b>	Arrhythmogenic right ventricular cardiomyopathy (ARVC), Cell adhesion molecules (CAMs), Dilated cardiomyopathy, ECM-receptor interaction, Focal adhesion, Hematopoietic cell lineage, Hypertrophic cardiomyopathy (HCM), Leukocyte transendothelial migration, Regulation of actin cytoskeleton

## Product images:



Coomassie blue staining of purified ITGA4 protein (Cat# TP314408). The protein was produced from HEK293T cells transfected with ITGA4 cDNA clone (Cat# [RC214408]) using MegaTran 2.0 (Cat# [TT210002]).