

Product datasheet for **TP314345L**

TUBB4Q (TUBB7P) (NM_020040) Human Recombinant Protein

Product data:

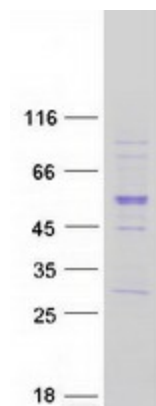
Product Type:	Recombinant Proteins
Description:	Recombinant protein of human tubulin, beta polypeptide 4, member Q (TUBB4Q), 1 mg
Species:	Human
Expression Host:	HEK293T
Expression cDNA Clone or AA Sequence:	>RC214345 representing NM_020040 Red =Cloning site Green =Tags(s)
	<p>MRELVLTQTGQCNGNIGAKFWEVISDEHAIDSAGTYHGDShLQLERINVHHHEASGGRYVSRVAVLDLEP GTMDSVRSRGPFGQVFRPDNFISRQCGAGNNWAKGRYTEGAELTESVMDVVRKEAESCDCLQGFQLTHSLG GGTGSGMGTLISKIWEIYPDRIINTLSILLPKVSDTVVEPYNATLSVHQLIENADETFCIDNEALYDI CSRTLKLPPTYGDLNHLVSATMSGVTTCLCFPDQLNADLRKLANMVPFPRLHFFMPGFAPLTSRGSQQ YRALTVAELTQQMFDANKMMAARDPRHGRYLAAAIFQGRMPMREVEQMFNIQDKNSSYFADWFPNNVK TAVCDIPPWGLKMSVFTTGNNTAVQELKRVSEQFTATFRRKAFLHWYTGEGMDEMEFTEAESNMNDLVSE YQQYQDATAEGGGV</p> <p>TRTRPLEQKLISEEDLAANDILDYKDDDDKV</p>
Tag:	C-Myc/DDK
Predicted MW:	48.3 kDa
Concentration:	>0.05 µg/µL as determined by microplate BCA method
Purity:	> 80% as determined by SDS-PAGE and Coomassie blue staining
Buffer:	25 mM Tris-HCl, 100 mM glycine, pH 7.3, 10% glycerol
Preparation:	Recombinant protein was captured through anti-DDK affinity column followed by conventional chromatography steps.
Note:	For testing in cell culture applications, please filter before use. Note that you may experience some loss of protein during the filtration process.
Storage:	Store at -80°C.
Stability:	Stable for 12 months from the date of receipt of the product under proper storage and handling conditions. Avoid repeated freeze-thaw cycles.
RefSeq:	<u>NP_064424</u>



[View online »](#)

Locus ID:	56604
RefSeq Size:	1305
Cytogenetics:	4q35.2
RefSeq ORF:	1302
Synonyms:	TUBB4Q
Protein Families:	Druggable Genome
Protein Pathways:	Gap junction, Pathogenic Escherichia coli infection

Product images:



Coomassie blue staining of purified TUBB4Q protein (Cat# [TP314345]). The protein was produced from HEK293T cells transfected with TUBB4Q cDNA clone (Cat# [RC214345]) using MegaTran 2.0 (Cat# [TT210002]).