

Product datasheet for **TP314307M**

SMYD2 (NM_020197) Human Recombinant Protein

Product data:

Product Type: Recombinant Proteins

Description: Recombinant protein of human SET and MYND domain containing 2 (SMYD2), 100 µg

Species: Human

Expression Host: HEK293T

Expression cDNA Clone or AA Sequence: >RC214307 representing NM_020197

Red=Cloning site **Green**=Tags(s)

MRAEGLGGLERFCSPGKGRGLRALQPFQVGDLLFSCPAYAYVLTVNERGNHCEYCFTRKEGLSKCGRCKQ
AFYCNVECQKEDWPMHKLECSMVFGENWNPSETVRLTARILAKQKIHPERTPSEKLLAVKEFESHLDK
LDNEKKDLIQSDIAALHHFYSKHLEFPDNDLSLVLFAQVNCNGFTIEDEELSHLGS AIFPDVALMNHSCC
PNVIVTYKGTAEVRAVQEIKPGEEVFTSYIDLPTEDRNDRLRDSYFFTCECQECTTKDKDKAKVEIR
KLSDPPKAEAIRDMVRYARNVIEFRRAKHYSPELLEICELSQEKMSVVFEDSNVYMLHMMYQAMGVC
LYMQDWEGALQYGQKIIKPYSKHYPLYSNLVASMWLKLGRLYMGLEHKAAGEKALKKAIAIMEVAHGKDH
PYISEIKQEIESH

TRTRPLEQKLISEEDLAANDILDYKDDDDKV

Tag: C-Myc/DDK

Predicted MW: 49.5 kDa

Concentration: >0.05 µg/µL as determined by microplate BCA method

Purity: > 80% as determined by SDS-PAGE and Coomassie blue staining

Buffer: 25 mM Tris-HCl, 100 mM glycine, pH 7.3, 10% glycerol

Preparation: Recombinant protein was captured through anti-DDK affinity column followed by conventional chromatography steps.

Note: For testing in cell culture applications, please filter before use. Note that you may experience some loss of protein during the filtration process.

Storage: Store at -80°C.

Stability: Stable for 12 months from the date of receipt of the product under proper storage and handling conditions. Avoid repeated freeze-thaw cycles.

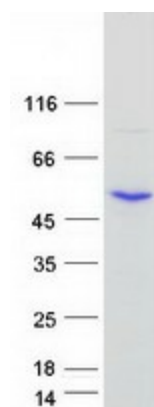
RefSeq: [NP_064582](#)



[View online »](#)

Locus ID:	56950
UniProt ID:	Q9NRG4
RefSeq Size:	1694
Cytogenetics:	1q32.3
RefSeq ORF:	1299
Synonyms:	HSKM-B; KMT3C; ZMYND14
Summary:	SET domain-containing proteins, such as SMYD2, catalyze lysine methylation (Brown et al., 2006 [PubMed 16805913]).[supplied by OMIM, Nov 2008]
Protein Families:	Druggable Genome

Product images:



Coomassie blue staining of purified SMYD2 protein (Cat# [TP314307]). The protein was produced from HEK293T cells transfected with SMYD2 cDNA clone (Cat# [RC214307]) using MegaTran 2.0 (Cat# [TT210002]).