

Product datasheet for **TP314267L**

RS1 (NM_000330) Human Recombinant Protein

Product data:

Product Type:	Recombinant Proteins
Description:	Recombinant protein of human retinoschisin 1 (RS1), 1 mg
Species:	Human
Expression Host:	HEK293T
Expression cDNA Clone or AA Sequence:	>RC214267 representing NM_000330 Red=Cloning site Green=Tags(s)

MSRKIEGFLLLLLFGYEATLGLSSTEDEGEDPWYQKACKCDCQGGPNALWSAGATSLDCIPECPYHKPLG
FESGEVTPDQITCSNPEQYVVGWYSSWTANKARLNSQGFCAWLSKFQDSSQWLQIDLKEIKVISGILTQG
RCDIDEWMTKYSVQYRTDERLNWIYYKDQTGNRRVFGNSDRTSTVQNLLRPPIISRFIRLIPLGWHVRI
AIRMELLECVSKCA

TRTRPLEQKLISEEDLAANDILDYKDDDDKV

Tag:	C-Myc/DDK
Predicted MW:	23 kDa
Concentration:	>0.05 µg/µL as determined by microplate BCA method
Purity:	> 80% as determined by SDS-PAGE and Coomassie blue staining
Buffer:	25 mM Tris-HCl, 100 mM glycine, pH 7.3, 10% glycerol
Preparation:	Recombinant protein was captured through anti-DDK affinity column followed by conventional chromatography steps.
Note:	For testing in cell culture applications, please filter before use. Note that you may experience some loss of protein during the filtration process.
Storage:	Store at -80°C.
Stability:	Stable for 12 months from the date of receipt of the product under proper storage and handling conditions. Avoid repeated freeze-thaw cycles.
RefSeq:	NP_000321
Locus ID:	6247
UniProt ID:	O15537



[View online »](#)

RefSeq Size: 3046

Cytogenetics: Xp22.13

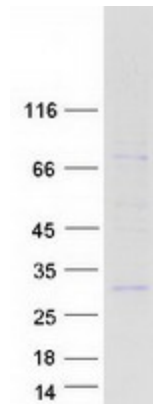
RefSeq ORF: 672

Synonyms: RS; XLRS1

Summary: This gene encodes an extracellular protein that plays a crucial role in the cellular organization of the retina. The encoded protein is assembled and secreted from photoreceptors and bipolar cells as a homo-oligomeric protein complex. Mutations in this gene are responsible for X-linked retinoschisis, a common, early-onset macular degeneration in males that results in a splitting of the inner layers of the retina and severe loss in vision. [provided by RefSeq, Oct 2008]

Protein Families: Secreted Protein

Product images:



Coomassie blue staining of purified RS1 protein (Cat# [TP314267]). The protein was produced from HEK293T cells transfected with RS1 cDNA clone (Cat# [RC214267]) using MegaTran 2.0 (Cat# [TT210002]).