

## Product datasheet for TP314259L

### Gliomedin (GLDN) (NM\_181789) Human Recombinant Protein

#### Product data:

Product Type:	Recombinant Proteins
Description:	Recombinant protein of human gliomedin (GLDN), 1 mg
Species:	Human
Expression Host:	HEK293T
Expression cDNA Clone or AA Sequence:	>RC214259 representing NM_181789 Red=Cloning site Green=Tags(s)

MARGAEGGRGDAGWGLRGALAAVALLSALNAAGTVFALCQWRGLSSALRALEAQRGREQREDSALRSFL  
 A  
 ELSRAPRGASAPPQDPASSARNKRSHSGEPAPHIRAESHDMLMMMTYSMPVIRVMVDLCNSTKGICLTG  
 P  
 SGPPGPPGAGGLPGHNGLDGQPGPQGPKEKGANGKRGKMGIPGAAGNPGERGEKGDHGLGLQGN  
 EGPP  
 GQKGEKGDKGDVSNVDVLLAGAKGDQGGPPGPPGPPGPPGPPGPPGSRRAKGPQPSPMFNGQCPGETCA  
 IPN  
 DDTLVGKADEKASEHHSPQAESMITSIGNPVQVLKVTETFGTWIRESANKSDDRIWVTEHFSGIMVKEFK  
 DQPSLLNGSYTFIHLPPYFHGCGHVYNNSLYYHKGGSNLTVRFEGQETSQTLKLENALYFDRKYL FAN  
 SKTYFNLA VDEKGLWIIYASSVDGSSILVAQLDERTFSVVQHVNNTYPKSKAGNAFIARGILYVTDTKDM  
 RVTFAFDLLGGKQINANFDLRTSQSVLAMLAYNM RDQHLYSWEDGHLMLYPVQFLSTTLNQ

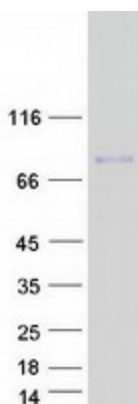
TRTRPLEQKLISEEDLAANDILDYKDDDDKV

Tag:	C-Myc/DDK
Predicted MW:	58.8 kDa
Concentration:	>0.05 µg/µL as determined by microplate BCA method
Purity:	> 80% as determined by SDS-PAGE and Coomassie blue staining
Buffer:	25 mM Tris-HCl, 100 mM glycine, pH 7.3, 10% glycerol
Preparation:	Recombinant protein was captured through anti-DDK affinity column followed by conventional chromatography steps.
Note:	For testing in cell culture applications, please filter before use. Note that you may experience some loss of protein during the filtration process.


[View online »](#)

<b>Storage:</b>	Store at -80°C.
<b>Stability:</b>	Stable for 12 months from the date of receipt of the product under proper storage and handling conditions. Avoid repeated freeze-thaw cycles.
<b>RefSeq:</b>	<a href="#">NP_861454</a>
<b>Locus ID:</b>	342035
<b>UniProt ID:</b>	<a href="#">Q6ZMI3</a>
<b>RefSeq Size:</b>	5084
<b>Cytogenetics:</b>	15q21.2
<b>RefSeq ORF:</b>	1653
<b>Synonyms:</b>	CLOM; COLM; CRG-L2; CRGL2; LCCS11; UNC-112; UNC-122
<b>Summary:</b>	This gene encodes a protein that contains olfactomedin-like and collagen-like domains. The encoded protein, which exists in both transmembrane and secreted forms, promotes formation of the nodes of Ranvier in the peripheral nervous system. Mutations in this gene cause a form of lethal congenital contracture syndrome in human patients. Autoantibodies to the encoded protein have been identified in sera from patients with multifocal motor neuropathy. [provided by RefSeq, May 2017]
<b>Protein Families:</b>	Transmembrane

### Product images:



Coomassie blue staining of purified GLDN protein (Cat# [TP314259]). The protein was produced from HEK293T cells transfected with GLDN cDNA clone (Cat# [RC214259]) using MegaTran 2.0 (Cat# [TT210002]).