

## Product datasheet for **TP314259**

### Gliomedin (GLDN) (NM\_181789) Human Recombinant Protein

#### Product data:

<b>Product Type:</b>	Recombinant Proteins
<b>Description:</b>	Recombinant protein of human gliomedin (GLDN), 20 µg
<b>Species:</b>	Human
<b>Expression Host:</b>	HEK293T
<b>Expression cDNA Clone or AA Sequence:</b>	>RC214259 representing NM_181789 <b>Red</b> =Cloning site <b>Green</b> =Tags(s)  MARGAEGGRGDAGWGLRGALAAVALLSALNAAGTVFALCQWRGLSSALRALEAQRGREQREDSALRSFLA ELSRAPRGASAPPQDPASSARNKRSHSGEPAPHIRAESHDMMLMMMTYSMPVIRVMVDLCNSTKGICLTGP SGPPGPPGAGGLPGHNGLDGQPGPQGPKEKGANGKRGKMGIPGAAGNPGERGEKGDHGELGLQGNEGPP GQKGEKGDKGDVSNVLLAGAKGDQPPGPPGPPGPPGPPGPPGSRRAKGRQPSMFNGQCPGETCAIPN DDTLVGKADEKASEHHSPAESMITSIGNPVQVLKVTETFTGTWIRESANKSDDRIWVTEHFSGIMVKEFK DQPSLLNGSYTFIHLPPYFHGCGHVYNNLSLYYHKGSNTLVRFEFGQETSQTLKLENALYFDRKYL FAN SKTYFNLAVDEKGLWIIYASSVDGSSILVAQLDERTFSVQHVNTTYPKSKAGNAFIARGILYVTDTKDM RVTFADFLLGGKQINANFDLRTSQSVLAMLAYNMRDQHLYSWEDGHLMLYPVQFLSTTLNQ  <b>TRTRPLEQKLISEEDLAANDILDYKDDDDKV</b>
<b>Tag:</b>	C-Myc/DDK
<b>Predicted MW:</b>	58.8 kDa
<b>Concentration:</b>	>0.05 µg/µL as determined by microplate BCA method
<b>Purity:</b>	> 80% as determined by SDS-PAGE and Coomassie blue staining
<b>Buffer:</b>	25 mM Tris-HCl, 100 mM glycine, pH 7.3, 10% glycerol
<b>Preparation:</b>	Recombinant protein was captured through anti-DDK affinity column followed by conventional chromatography steps.
<b>Note:</b>	For testing in cell culture applications, please filter before use. Note that you may experience some loss of protein during the filtration process.
<b>Storage:</b>	Store at -80°C.
<b>Stability:</b>	Stable for 12 months from the date of receipt of the product under proper storage and handling conditions. Avoid repeated freeze-thaw cycles.



[View online »](#)

RefSeq: [NP\\_861454](#)

Locus ID: 342035

UniProt ID: [Q6ZMI3](#)

RefSeq Size: 5084

Cytogenetics: 15q21.2

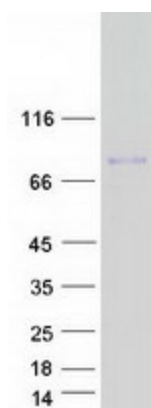
RefSeq ORF: 1653

Synonyms: CLOM; COLM; CRG-L2; CRGL2; LCCS11; UNC-112; UNC-122

**Summary:** This gene encodes a protein that contains olfactomedin-like and collagen-like domains. The encoded protein, which exists in both transmembrane and secreted forms, promotes formation of the nodes of Ranvier in the peripheral nervous system. Mutations in this gene cause a form of lethal congenital contracture syndrome in human patients. Autoantibodies to the encoded protein have been identified in sera from patients with multifocal motor neuropathy. [provided by RefSeq, May 2017]

**Protein Families:** Transmembrane

### Product images:



Coomassie blue staining of purified GLDN protein (Cat# TP314259). The protein was produced from HEK293T cells transfected with GLDN cDNA clone (Cat# [RC214259]) using MegaTran 2.0 (Cat# [TT210002]).