

Product datasheet for TP314230M

GCKR (NM_001486) Human Recombinant Protein

Product data:

Product Type:	Recombinant Proteins
Description:	Recombinant protein of human glucokinase (hexokinase 4) regulator (GCKR), 100 µg
Species:	Human
Expression Host:	HEK293T
Expression cDNA Clone or AA Sequence:	>RC214230 representing NM_001486 Red=Cloning site Green=Tags(s)

MPGTKRFQHVIETPEPGKWELSGYEAAPVITEKSNPLTQDLKADAENIVRLLGQCDAEIFQEEGQALST
YQRLYSGSILTTMVQVAGKVQEVLEKPDGGLVLSGGGTSGRMAFLMSVSFNQLMKGLGQKPLYTYLIAG
GDRSVASREGTEDSALHGIEELKKVAAGKKRVIVIGISVGLSAPFVAGQMDCCMNNTAVFLPVLVGFNP
VSMARNDPIEDWSSTRQVAERMQKMQEKQKAFVLNPAIGPEGLSGSSRMKGGSATKILLETLLAAHKT
VDQGIAASQRCLLEILRTFERAHQVTYSQSPKIATLMKSVSTSLEKKGHVYLVGWQTLGIIAIMDGVECI
HTFGADFRDVRGFLIGDHSDFNQAELTNQGPQFTFSQEDFLTSILPSLTEIDTVFIFTLDDNLTEVQ
TIVEQVKEKTNHIQALAHSTVGQTLPIPLKLFPSIISITWPLLFFEYEGNFIQKFQRELSTKWWLNTVS
TGAHVLLGKILQNHMLDLRISNSKLFWRALAMLQRFSGQSKARCIESLLRAIHFPQLSDDIRAAPISCH
VQVAHEKEQVIPIALLSLLFRCSITEAQAHLAAAPSVCEAVRSALAGPGQKRTADPLEILEPQV

TRTRPLEQKLISEEDLAANDILDYKDDDDKV

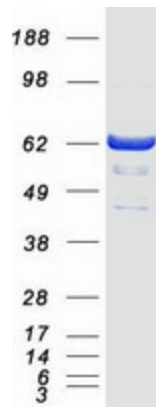
Tag:	C-Myc/DDK
Predicted MW:	68.5 kDa
Concentration:	>0.05 µg/µL as determined by microplate BCA method
Purity:	> 80% as determined by SDS-PAGE and Coomassie blue staining
Buffer:	25 mM Tris-HCl, 100 mM glycine, pH 7.3, 10% glycerol
Preparation:	Recombinant protein was captured through anti-DDK affinity column followed by conventional chromatography steps.
Note:	For testing in cell culture applications, please filter before use. Note that you may experience some loss of protein during the filtration process.
Storage:	Store at -80°C.



[View online »](#)

Stability:	Stable for 12 months from the date of receipt of the product under proper storage and handling conditions. Avoid repeated freeze-thaw cycles.
RefSeq:	NP_001477
Locus ID:	2646
UniProt ID:	Q14397 , A0A0C4DFN2
RefSeq Size:	2197
Cytogenetics:	2p23.3
RefSeq ORF:	1875
Synonyms:	FGQTL5; GKRP
Summary:	This gene encodes a protein belonging to the GCKR subfamily of the SIS (Sugar ISomerase) family of proteins. The gene product is a regulatory protein that inhibits glucokinase in liver and pancreatic islet cells by binding non-covalently to form an inactive complex with the enzyme. This gene is considered a susceptibility gene candidate for a form of maturity-onset diabetes of the young (MODY). [provided by RefSeq, Jul 2008]

Product images:



Coomassie blue staining of purified GCKR protein (Cat# [TP314230]). The protein was produced from HEK293T cells transfected with GCKR cDNA clone (Cat# [RC214230]) using MegaTran 2.0 (Cat# [TT210002]).