

## Product datasheet for **TP314230L**

### GCKR (NM\_001486) Human Recombinant Protein

#### Product data:

**Product Type:** Recombinant Proteins  
**Description:** Recombinant protein of human glucokinase (hexokinase 4) regulator (GCKR), 1 mg  
**Species:** Human  
**Expression Host:** HEK293T  
**Expression cDNA Clone or AA Sequence:** >RC214230 representing NM\_001486  
**Red**=Cloning site **Green**=Tags(s)

MPGTKRFQHVIETPEPGKWELSGYEAAPVITEKSNPLTQDLKADAENIVRLLGQCDAEIFQEEGQALST  
YQRLYSGSILTTMVQVAGKVQEVLEKPDGGLVWLSGGGTSGRMAFLMSVSNQMLKGLGQKPLYTYLIAG  
GDRSVASREGTEDSALHGIEELKKVAAGKKRVIVIGISVGLSAPFVAGQMDCCMNNTAVFLPVLVGFNP  
VSMARNDPIEDWSSTFRQVAERMQKMQEKQKAFVLNPAIGPEGLSGSSRMKGGSATKILLETLLAAHKT  
VDQGIAASQRCLLEILRTFERAHQVTYSQSPKIATLMKSVSTSLEKKGHVYLVGWQTLGIIAIMDGVECI  
HTFGADFRDVRGFLIGDHSDFNQAELTNQGPQFTFSQEDFLTSILPSLTEIDTVFIFTLDDNLTEVQ  
TIVEQVKEKTNHIQALAHSTVGQTLPIPLKLFPSIISITWPLLFFEYEGNFIQKFQRELSTKWWLNTVS  
TGAHVLLGKILQNHMLDLRISNSKLFWRALAMLQRFSGQSKARCIESLLRAIHFPQLSDDIRAAPISCH  
VQVAHEKEQVIPIALLSLLFRCSITEAQAHLAAAPSVCEAVRSALAGPGQKRTADPLEILEPVDVQ

**TRTRPLEQKLISEEDLAANDILDYKDDDDKV**

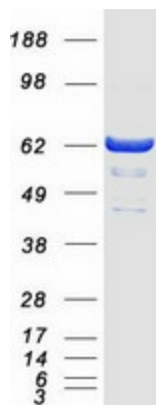
**Tag:** C-Myc/DDK  
**Predicted MW:** 68.5 kDa  
**Concentration:** >0.05 µg/µL as determined by microplate BCA method  
**Purity:** > 80% as determined by SDS-PAGE and Coomassie blue staining  
**Buffer:** 25 mM Tris-HCl, 100 mM glycine, pH 7.3, 10% glycerol  
**Preparation:** Recombinant protein was captured through anti-DDK affinity column followed by conventional chromatography steps.  
**Note:** For testing in cell culture applications, please filter before use. Note that you may experience some loss of protein during the filtration process.  
**Storage:** Store at -80°C.



[View online »](#)

<b>Stability:</b>	Stable for 12 months from the date of receipt of the product under proper storage and handling conditions. Avoid repeated freeze-thaw cycles.
<b>RefSeq:</b>	<a href="#">NP_001477</a>
<b>Locus ID:</b>	2646
<b>UniProt ID:</b>	<a href="#">Q14397</a> , <a href="#">A0A0C4DFN2</a>
<b>RefSeq Size:</b>	2197
<b>Cytogenetics:</b>	2p23.3
<b>RefSeq ORF:</b>	1875
<b>Synonyms:</b>	FGQTL5; GKRP
<b>Summary:</b>	This gene encodes a protein belonging to the GCKR subfamily of the SIS (Sugar ISomerase) family of proteins. The gene product is a regulatory protein that inhibits glucokinase in liver and pancreatic islet cells by binding non-covalently to form an inactive complex with the enzyme. This gene is considered a susceptibility gene candidate for a form of maturity-onset diabetes of the young (MODY). [provided by RefSeq, Jul 2008]

### Product images:



Coomassie blue staining of purified GCKR protein (Cat# [TP314230]). The protein was produced from HEK293T cells transfected with GCKR cDNA clone (Cat# [RC214230]) using MegaTran 2.0 (Cat# [TT210002]).