

Product datasheet for **TP314230**

GCKR (NM_001486) Human Recombinant Protein

Product data:

Product Type: Recombinant Proteins
Description: Recombinant protein of human glucokinase (hexokinase 4) regulator (GCKR), 20 µg
Species: Human
Expression Host: HEK293T
Expression cDNA Clone or AA Sequence: >RC214230 representing NM_001486
Red=Cloning site **Green**=Tags(s)

MPGTKRFQHVIETPEPGKWELSGYEAAPVITEKSNPLTQDLKADAENIVRLLGQCDAEIFQEEGQALST
YQRLYSGSILTTMVQVAGKVQEVLEKPDGGLVWLSGGGTSGRMAFLMSVSFNQLMKGLGQKPLYTYLIAG
GDRSVASREGTEDSALHGIEELKKVAAGKKRVIVIGISVGLSAPFVAGQMDCCMNNTAVFLPVLVGFNP
VSMARNDPIEDWSSTFRQVAERMQKMQEKQKAFVLNPAIGPEGLSGSSRMKGGSATKILLETLLAAHKT
VDQGIAASQRCLLEILRTFERAHQVTYSQSPKIATLMKSVSTSLEKKGHVYLVGWQTLGIIAIMDGVECI
HTFGADFRDVRGFLIGDHSDMFNQKAELTNQGPQFTFSQEDFLTSILPSLTEIDTVFIFTLDDNLTEVQ
TIVEQVKEKTNHIQALAHSTVGQTLPIPLKCLFSPISITWPLLFFEYEGNFIQKFQRELSTKWWLNTVS
TGAHVLLGKILQNHMLDLRISNSKLFWRALAMLQRFSGQSKARCIESLLRAIHFPQLSDDIRAAPISCH
VQVAHEKEQVIPIALLSLLFRCSITEAQAHLAAAPSVCEAVRSALAGPGQKRTADPLEILEPQV

TRTRPLEQKLISEEDLAANDILDYKDDDDKV

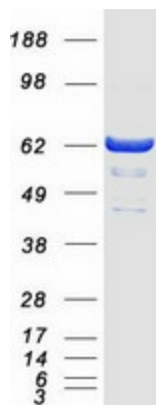
Tag: C-Myc/DDK
Predicted MW: 68.5 kDa
Concentration: >0.05 µg/µL as determined by microplate BCA method
Purity: > 80% as determined by SDS-PAGE and Coomassie blue staining
Buffer: 25 mM Tris-HCl, 100 mM glycine, pH 7.3, 10% glycerol
Preparation: Recombinant protein was captured through anti-DDK affinity column followed by conventional chromatography steps.
Note: For testing in cell culture applications, please filter before use. Note that you may experience some loss of protein during the filtration process.
Storage: Store at -80°C.



[View online »](#)

Stability:	Stable for 12 months from the date of receipt of the product under proper storage and handling conditions. Avoid repeated freeze-thaw cycles.
RefSeq:	NP_001477
Locus ID:	2646
UniProt ID:	Q14397 , A0A0C4DFN2
RefSeq Size:	2197
Cytogenetics:	2p23.3
RefSeq ORF:	1875
Synonyms:	FGQTL5; GKRP
Summary:	This gene encodes a protein belonging to the GCKR subfamily of the SIS (Sugar ISomerase) family of proteins. The gene product is a regulatory protein that inhibits glucokinase in liver and pancreatic islet cells by binding non-covalently to form an inactive complex with the enzyme. This gene is considered a susceptibility gene candidate for a form of maturity-onset diabetes of the young (MODY). [provided by RefSeq, Jul 2008]

Product images:



Coomassie blue staining of purified GCKR protein (Cat# TP314230). The protein was produced from HEK293T cells transfected with GCKR cDNA clone (Cat# [RC214230]) using MegaTran 2.0 (Cat# [TT210002]).