

Product datasheet for TP314206

KLC2 (NM_022822) Human Recombinant Protein

Product data:

Product Type: Recombinant Proteins
Description: Recombinant protein of human kinesin light chain 2 (KLC2), transcript variant 1, 20 µg
Species: Human
Expression Host: HEK293T
Expression cDNA Clone or AA Sequence: >RC214206 representing NM_022822
Red=Cloning site **Green**=Tags(s)

MAMMVFPREEKLSQDEIVLGTKAVIQGLETLRGEHRALLAPLVAPEAGEAEPGSQERCILLRRSLEAIEL
GLGEAQVILALSSHLGAVESEKQKLRAQVRRRLVQENQWLREELAGTQQKLRSEQAVAQLEEEKQHLLFM
SQIRKLDEDEASPNEEKGDVPKDTLDDLFPNEDEQSPAPSPGGGDVSGQHGGYEIPARLRTLHNLVIQYAS
QGRYEAVPLCKQALEDLEKTSGHDHPDVATMLNILALVYRDQNKYEAAHLLNDALAIREKTLGKDHPA
VAATLNNLAVLYGKRKYKEAEPLCKRALEIREKVLGKFHPDVAKQLSNLALLCQNQGKAEVEVEYYRRA
LEIYATRLGPDDPNVAKTKNNLASCYLKQGKYQDAETLYKEILTRAHEKEFGSVNGDNKPIWMHAEEREE
SKDKRRDSAPYGEYGSWYKACKVDSPTVNTTLRSLGALYRRQGKLEAAHTLED CASRNRKQGLDPASQTK
VVLLKDGSGRRGDRSSRD MAGGAGPRSESDLEDVGP TAEWNGD GSGSLRRSGSFGKLRDALRRSSEML
VKKLQGGTQP EPPNPRMKRASSLNFLNKSVEEPTQPGGTGLSDSRTLSSSSMDLSRRSSLVG

TRTRPLEQKLISEEDLAANDILDYKDDDDKV

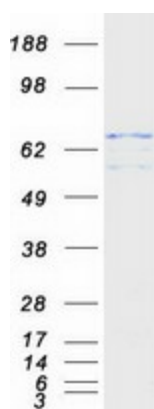
Tag: C-Myc/DDK
Predicted MW: 68.8 kDa
Concentration: >0.05 µg/µL as determined by microplate BCA method
Purity: > 80% as determined by SDS-PAGE and Coomassie blue staining
Buffer: 25 mM Tris-HCl, 100 mM glycine, pH 7.3, 10% glycerol
Preparation: Recombinant protein was captured through anti-DDK affinity column followed by conventional chromatography steps.
Note: For testing in cell culture applications, please filter before use. Note that you may experience some loss of protein during the filtration process.
Storage: Store at -80°C.



[View online »](#)

Stability:	Stable for 12 months from the date of receipt of the product under proper storage and handling conditions. Avoid repeated freeze-thaw cycles.
RefSeq:	NP_073733
Locus ID:	64837
UniProt ID:	Q9H0B6
RefSeq Size:	2992
Cytogenetics:	11q13.2
RefSeq ORF:	1866
Summary:	The protein encoded by this gene is a light chain of kinesin, a molecular motor responsible for moving vesicles and organelles along microtubules. Defects in this gene are a cause of spastic paraplegia, optic atrophy, and neuropathy (SPOAN) syndrome. [provided by RefSeq, Mar 2016]
Protein Families:	Druggable Genome

Product images:



Coomassie blue staining of purified KLC2 protein (Cat# TP314206). The protein was produced from HEK293T cells transfected with KLC2 cDNA clone (Cat# [RC214206]) using MegaTran 2.0 (Cat# [TT210002]).