

## Product datasheet for **TP314051M**

### MICALL1 (NM\_033386) Human Recombinant Protein

#### Product data:

Product Type:	Recombinant Proteins
Description:	Recombinant protein of human MICAL-like 1 (MICALL1), 100 µg
Species:	Human
Expression Host:	HEK293T
Expression cDNA Clone or AA Sequence:	>RC214051 representing NM_033386 <b>Red</b> =Cloning site <b>Green</b> =Tags(s)

MAGPRGALLAWCRRQCEGYRGEIRDLSSEFRDGLAFCAILHRHRPDLDFDSLSKDNVFENNRLAFEVA  
EKELGIPALLDPNDMVSMSVPDCLSIMTYVSQYYNHFCSPGQAGVSPPRKGLAPCSPPSVAPTPEPEDV  
AQGEELSSGSLSEQGTGQTPSSTCAACQQHVHLVQRYLADGRLYHRHCFRCRCSSTLLPGAYENGPEEG  
TFVCAEHCARLGPGRSGTRPGPFSQPKQQHQQLAEDAQDVPGGGSPSSAPAGAEADGPKASPEARQI  
PTKPRVPGKLQELASPPAGRPTPAPRKASESTTPAPPTPRPRSSLQQENLVEQAGSSSLVNGRLHELPVP  
KPRGTPKPSEGTPAPRKDPPWITLVQAEPKKKPAPLPPSSSPGPPSQDSRQVENGGTEEVAQPSPTASLE  
SKPYNPFEEEEEDKEEEAPAAPSLATSPALGHPESTPKSLHPWYGITPTSSPKTKRPPAPRAPSASPLAL  
HASRLSHSEPPSATPSPALSVELSSESASQTAGAEELLEPPAVPKSSSEPAVHAPGTPGNPVSLSSTNSSL  
ASSGELVEPRVEQMPQASPLAPRTRGSSGPQPAKPCSGATPTPLLVGDRSPVSPGSSSPQLQVKSSC  
KENPFNRKPSAASPATKKATKGSKPVRPPAPGHGFPLIKRQVADQYIPEEDIHGEMDTIERRLEDALEH  
RGVLLLEEKLRGGLNEGREDMLVDWFKLIHEKHLLVRRESELIYVFKQQNLEQRQADVEYELRCLLNKPE  
KDWTEEDRAREKVLMLQELVTLIEQRNAIINCLDEDRQREEEEDKMLEAMIKKKEFQREAEPEGKKKGKFK  
TMKMLKLLGNKRDAKSKSPRDKS

**TRTRPLEQKLISEEDLAANDILDYKDDDDKV**

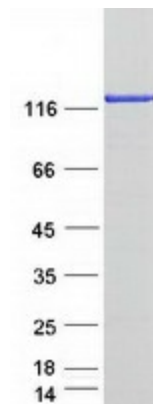
Tag:	C-Myc/DDK
Predicted MW:	93.3 kDa
Concentration:	>0.05 µg/µL as determined by microplate BCA method
Purity:	> 80% as determined by SDS-PAGE and Coomassie blue staining
Buffer:	25 mM Tris-HCl, 100 mM glycine, pH 7.3, 10% glycerol
Preparation:	Recombinant protein was captured through anti-DDK affinity column followed by conventional chromatography steps.



[View online »](#)

<b>Note:</b>	For testing in cell culture applications, please filter before use. Note that you may experience some loss of protein during the filtration process.
<b>Storage:</b>	Store at -80°C.
<b>Stability:</b>	Stable for 12 months from the date of receipt of the product under proper storage and handling conditions. Avoid repeated freeze-thaw cycles.
<b>RefSeq:</b>	<a href="#">NP_203744</a>
<b>Locus ID:</b>	85377
<b>UniProt ID:</b>	<a href="#">Q8N3F8</a>
<b>RefSeq Size:</b>	3882
<b>Cytogenetics:</b>	22q13.1
<b>RefSeq ORF:</b>	2589
<b>Synonyms:</b>	MICAL-L1; MIRAB13
<b>Summary:</b>	Probable lipid-binding protein with higher affinity for phosphatidic acid, a lipid enriched in recycling endosome membranes. On endosome membranes, may act as a downstream effector of Rab proteins recruiting cytosolic proteins to regulate membrane tubulation. May be involved in a late step of receptor-mediated endocytosis regulating for instance endocytosed-EGF receptor trafficking. Alternatively, may regulate slow endocytic recycling of endocytosed proteins back to the plasma membrane. May indirectly play a role in neurite outgrowth. [UniProtKB/Swiss-Prot Function]

### Product images:



Coomassie blue staining of purified MICALL1 protein (Cat# [TP314051]). The protein was produced from HEK293T cells transfected with MICALL1 cDNA clone (Cat# [RC214051]) using MegaTran 2.0 (Cat# [TT210002]).