

Product datasheet for **TP314041M**

Sarcalumenin (SRL) (NM_001098814) Human Recombinant Protein

Product data:

Product Type:	Recombinant Proteins
Description:	Recombinant protein of human sarcalumenin (SRL), 100 µg
Species:	Human
Expression Host:	HEK293T
Expression cDNA Clone or AA Sequence:	>RC214041 representing NM_001098814 Red =Cloning site Green =Tags(s)

MRALVLLGCLLASLLFSGQAEETEDANEEAPLRDRSHIEKTLMLNEDKPSDDYSAVLQRLRKIYHSSIKP
LEQSYKYNELRQHEITDGEITSKPMVFLGPWSVGKSTMINYLLGLENTYQLYTGAEPPTSEFTVLMHG
PKLKTIEGIVMAADSARSFSPLEKFGQNFLEKLIGIEVPHKLLERVTFVDTPGIENRQKQERGYPFNDV
CQWFIDRADLIFVFDPTKLDVGLLEMLFRQLKGRESQIRIILNKADNLATQMLMRVYGALFWSLAPLI
NVTEPPRVVSSFWPQEYKPDTHQELFLQEEISLLEDLNQVIENRLENKIAFIRQHAIRVRIHALLVDYR
LQTYKDKMTFFSDGELVFKDIVEDPDKFYIFKILAKTNVSKFDLPNREAYKDFGINPISSFKLLSQQC
SYMGGCFLEKIERAITQELPGLLGSGLGKNPGALNCDKTGCSETPKNRYRKH

TRTRPLEQKLISEEDLAANDILDYKDDDDKV

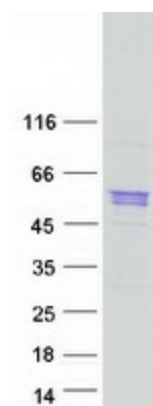
Tag:	C-Myc/DDK
Predicted MW:	54.3 kDa
Concentration:	>0.05 µg/µL as determined by microplate BCA method
Purity:	> 80% as determined by SDS-PAGE and Coomassie blue staining
Buffer:	25 mM Tris-HCl, 100 mM glycine, pH 7.3, 10% glycerol
Preparation:	Recombinant protein was captured through anti-DDK affinity column followed by conventional chromatography steps.
Note:	For testing in cell culture applications, please filter before use. Note that you may experience some loss of protein during the filtration process.
Storage:	Store at -80°C.
Stability:	Stable for 12 months from the date of receipt of the product under proper storage and handling conditions. Avoid repeated freeze-thaw cycles.
RefSeq:	NP_001092284



[View online »](#)

Locus ID:	6345
UniProt ID:	Q86TD4 , B3KPP4 , Q86TD4-2
RefSeq Size:	4219
Cytogenetics:	16p13.3
RefSeq ORF:	1419
Synonyms:	SAR
Summary:	May be involved in the regulation of calcium transport.[UniProtKB/Swiss-Prot Function]

Product images:



Coomassie blue staining of purified SRL protein (Cat# [TP314041]). The protein was produced from HEK293T cells transfected with SRL cDNA clone (Cat# [RC214041]) using MegaTran 2.0 (Cat# [TT210002]).