

Product datasheet for **TP314041L**

Sarcalumenin (SRL) (NM_001098814) Human Recombinant Protein

Product data:

Product Type: Recombinant Proteins
Description: Recombinant protein of human sarcalumenin (SRL), 1 mg
Species: Human
Expression Host: HEK293T
Expression cDNA Clone or AA Sequence: >RC214041 representing NM_001098814
Red=Cloning site **Green**=Tags(s)

MRALVLLGCLLASLLFSGQAEETEDANEEAPLRDRSHIEKTLMLNEDKPSDDYSAVLQRLRKIYHSSIKP
LEQSYKYNELRQHEITDGEITSKPMVFLGPWSVGKSTMINYLLGLENTYQLYTGAEPPTSEFTVLMHG
PKLKTIEGIVMAADSARSFSPLEKFGQNFLEKLIGIEVPHKLLERVTFVDTPGIENRQKQERGYPFNDV
CQWFIDRADLIFVFDPTKLDVGLLEMLFRQLKGRESQIRIILNKADNLATQMLMRVYGALFWSLAPLI
NVTEPPRVVSSFWPQEYKPDTHQELFLQEEISLLEDLNQVIENRLENKIAFIRQHAIRVRIHALLVDYR
LQTYKDKMTFFSDGELVFKDIVEDPDKFYIFKTLAKTNVSKFDLPNREAYKDFGINPISSFKLLSQQC
SYMGGCFLEKIERAITQELPGLLGSGLGKNPGALNCDKTGCSETPKNRYRKH

TRTRPLEQKLISEEDLAANDILDYKDDDDKV

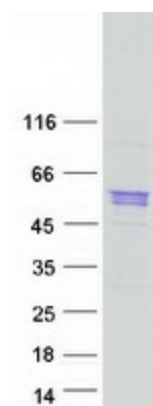
Tag: C-Myc/DDK
Predicted MW: 54.3 kDa
Concentration: >0.05 µg/µL as determined by microplate BCA method
Purity: > 80% as determined by SDS-PAGE and Coomassie blue staining
Buffer: 25 mM Tris-HCl, 100 mM glycine, pH 7.3, 10% glycerol
Preparation: Recombinant protein was captured through anti-DDK affinity column followed by conventional chromatography steps.
Note: For testing in cell culture applications, please filter before use. Note that you may experience some loss of protein during the filtration process.
Storage: Store at -80°C.
Stability: Stable for 12 months from the date of receipt of the product under proper storage and handling conditions. Avoid repeated freeze-thaw cycles.
RefSeq: [NP_001092284](#)



[View online »](#)

| | |
|---------------|--|
| Locus ID: | 6345 |
| UniProt ID: | Q86TD4 , B3KPP4 , Q86TD4-2 |
| RefSeq Size: | 4219 |
| Cytogenetics: | 16p13.3 |
| RefSeq ORF: | 1419 |
| Synonyms: | SAR |
| Summary: | May be involved in the regulation of calcium transport.[UniProtKB/Swiss-Prot Function] |

Product images:



Coomassie blue staining of purified SRL protein (Cat# [TP314041]). The protein was produced from HEK293T cells transfected with SRL cDNA clone (Cat# [RC214041]) using MegaTran 2.0 (Cat# [TT210002]).