

## Product datasheet for TP314041

### Sarcalumenin (SRL) (NM\_001098814) Human Recombinant Protein

#### Product data:

|                                       |   |
|---------------------------------------|---|
| Product Type:                         | Recombinant Proteins  |
| Description:                          | Recombinant protein of human sarcalumenin (SRL), 20 µg                                |
| Species:                              | Human   |
| Expression Host:                      | HEK293T   |
| Expression cDNA Clone or AA Sequence: | >RC214041 representing NM_001098814<br><b>Red</b> =Cloning site <b>Green</b> =Tags(s) |

MRALVLLGCLLASLLFSGQAEETEDANEEAPLRDRSHIEKTLMLNEDKPSDDYSAVLQRLRKIYHSSIKP  
LEQSYKYNELRQHEITDGEITSKPMVLFLGPWSVGKSTMINYLLGLENTYQLYTGAEPPTSEFTVLMHG  
PKLKTIEGIVMAADSARSFSPLEKFGQNFLEKLIGIEVPHKLLERVTFVDTPGIENRKQQERGYPFNDV  
CQWFIDRADLIFVVDPTKLDVLELEMLFRQLKGRESQIRIILNKADNLATQMLMRVYGALFWSLAPLI  
NVTEPPRVYVSSFWPQEYKPDTHQELFLQEEISLLEDLNQVIENRLENKIAFIRQHAIRVRIHALLVDYR  
LQTYKDKMTFFSDGELVFKDIVEDPDKFYIFKTILAKTNVSKFDLPNREAYKDFFGINPISSFKLLSQQC  
SYMGGCFLEKIERAITQELPGLLGSLGLGKNPGALNCDKTGCSETPKNRYRKH

**TRTRPLEQKLISEEDLAANDILDYKDDDDKV**

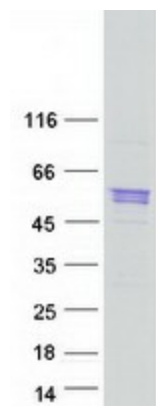
|                |  |
|----------------|--|
| Tag:           | C-Myc/DDK  |
| Predicted MW:  | 54.3 kDa   |
| Concentration: | >0.05 µg/µL as determined by microplate BCA method   |
| Purity:        | > 80% as determined by SDS-PAGE and Coomassie blue staining  |
| Buffer:        | 25 mM Tris-HCl, 100 mM glycine, pH 7.3, 10% glycerol   |
| Preparation:   | Recombinant protein was captured through anti-DDK affinity column followed by conventional chromatography steps.                                     |
| Note:          | For testing in cell culture applications, please filter before use. Note that you may experience some loss of protein during the filtration process. |
| Storage:       | Store at -80°C.  |
| Stability:     | Stable for 12 months from the date of receipt of the product under proper storage and handling conditions. Avoid repeated freeze-thaw cycles.        |
| RefSeq:        | <u><a href="#">NP_001092284</a></u>  |



[View online »](#)

|               |  |
|---------------|--|
| Locus ID:     | 6345   |
| UniProt ID:   | <u>Q86TD4</u>  |
| RefSeq Size:  | 4219   |
| Cytogenetics: | 16p13.3  |
| RefSeq ORF:   | 1419   |
| Synonyms:     | SAR  |
| Summary:      | May be involved in the regulation of calcium transport.[UniProtKB/Swiss-Prot Function] |

### Product images:



Coomassie blue staining of purified SRL protein (Cat# TP314041). The protein was produced from HEK293T cells transfected with SRL cDNA clone (Cat# [RC214041]) using MegaTran 2.0 (Cat# [TT210002]).