

Product datasheet for **TP314038M**

EMILIN2 (NM_032048) Human Recombinant Protein

Product data:

Product Type:	Recombinant Proteins
Description:	Recombinant protein of human elastin microfibril interfacier 2 (EMILIN2), 100 µg
Species:	Human
Expression Host:	HEK293T
Expression cDNA Clone or AA Sequence:	>RC214038 representing NM_032048 Red =Cloning site Green =Tags(s)

MWQPRRPWPRVPWRWALALLALVGAGLCHAGPQPQGYPARPSARNKNWCAYIVNKNVSCSVLEGSSEFIQA
QYNCAWNQMPCPSALVYRVNFRPRYVTRYKTVTQLEWRCCPGFRGGDCQEGPKDPVKTLRPTPARPRNSL
KKATDNEPSQFSEPRKTLSPGTGTAQPSWGVDPKEGPQELQEKKIQVLEEKVLRRLTRTVLDLQSSLAGVSE
NLKHATQDDASRTRAPGLSSQHPKPDTTVSGDTETGQSPGVFNTKESGMKDIKSELAEVKDTLKNKSDKL
EELDGVKVGEGYEQLRQLQEAAQGPTVTMTTNELYQAYVDSKIDALREELMEGMDRKLADLKNKSCYKLTG
LQQCDDYGSSYLGVIELIGEKETSLRKEINNLRARLQEPSAQANCCDSEKNGDIGQIQIKTLDQKIERVA
EATRMLNGLRDNEFDRLIVPEPDVDFDAKWNELDARINVTEKNAEEHCFYIEETLRGAINGEVGDQLKLV
DQKIQSLEDRLGSVLLQMTNNTGAELSPPGAAALPGVSGSGDERVMMELNHLKDKVQVVEDICLLNIQGG
PHGMEGALPNREDRAVRDSLHLLKSLNDTMRKFKQETEQTIQKLQQDFSLYSQLNHTENDVTHLQKEMS
NCRAGENAGMGRFTKVGEQERTVDLTPSPQHPVAHCCSQLEERWQRLQSQVISELDACKECTQGVQREVS
MVEGRVSHMEKTC SKLDSISGNLQRIKEGLNKHVSSLWNCVRQMNGTLRSHSRDISGLKNSVQQFYSHVF
QISTDLQDLVKFQPSAKAPSPPPPAEAPKEPLQPEPAPPRPSGPATAEDPGRRPVLQRPPEERPPQPPG
STGVIAETGQAGPPAGAGVSGRGLPRGVDGQTGSGTVPGAEGFAGAPGYPKSPPVASPGAPVPSLVSFSA
GLTQKPFPSDGGVLFNKVLVNDGDVYNPSTGVFTAPYDGRYLITATLTPERDAYVEAVLSVSNASVAQL
HTAGYRREFLEYHRPPGALHTCGGPGAFHLIVHLKAGDAVNVVVTGGKLAHTDFDEMYSTFSGVFLYPFL
SHL

TRTRPLEQKLISEEDLAANDILDYKDDDDKV

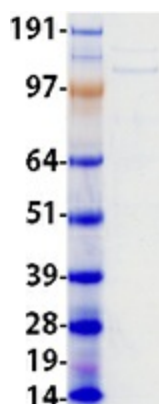
Tag:	C-Myc/DDK
Predicted MW:	115.5 kDa
Concentration:	>0.05 µg/µL as determined by microplate BCA method
Purity:	> 80% as determined by SDS-PAGE and Coomassie blue staining
Buffer:	25 mM Tris-HCl, 100 mM glycine, pH 7.3, 10% glycerol



[View online »](#)

Preparation:	Recombinant protein was captured through anti-DDK affinity column followed by conventional chromatography steps.
Note:	For testing in cell culture applications, please filter before use. Note that you may experience some loss of protein during the filtration process.
Storage:	Store at -80°C.
Stability:	Stable for 12 months from the date of receipt of the product under proper storage and handling conditions. Avoid repeated freeze-thaw cycles.
RefSeq:	NP_114437
Locus ID:	84034
UniProt ID:	Q9BXX0
RefSeq Size:	4009
Cytogenetics:	18p11.32-p11.31
RefSeq ORF:	3159
Synonyms:	EMILIN-2; FOAP-10
Summary:	May be responsible for anchoring smooth muscle cells to elastic fibers, and may be involved not only in the formation of the elastic fiber, but also in the processes that regulate vessel assembly. Has cell adhesive capacity.[UniProtKB/Swiss-Prot Function]

Product images:



Coomassie blue staining of purified EMILIN2 protein (Cat# [TP314038]). The protein was produced from HEK293T cells transfected with EMILIN2 cDNA clone (Cat# [RC214038]) using MegaTran 2.0 (Cat# [TT210002]).