

## Product datasheet for **TP314038**

### EMILIN2 (NM\_032048) Human Recombinant Protein

#### Product data:

Product Type:	Recombinant Proteins
Description:	Recombinant protein of human elastin microfibril interfacier 2 (EMILIN2), 20 µg
Species:	Human
Expression Host:	HEK293T
Expression cDNA Clone or AA Sequence:	>RC214038 representing NM_032048 <b>Red</b> =Cloning site <b>Green</b> =Tags(s)

MWQPRRPWPRVPWRWALALLALVGAGLCHAGPQPGYPARPSARNKNWCAYIVNKNVSCSVLEGSESEFIQA  
QYNCAWNQMPCPSALVYRVNFRPRYVTRYKTVTQLEWRCCPGFRGGDCQEGPKDPVKTLRPTPARPRNSL  
KKATDNEPSQFSEPRKTLSPGTGTAQPSWGVDPKEGPQELQEKKIQVLEEKVLRRLTRTVLDLQSSLAGVSE  
NLKHATQDDASRTRAPGLSSQHPKPDTTVSGDTETGQSPGVFNTKESGMKDIKSELAEVKDTLKNKSDKL  
EELDGVKVGEGYEQLRQLQEAAQGPTVTMTTNELYQAYVDSKIDALREELMEGMDRKLADLKNKSCYKLTG  
LQQCDDYGSSYLGVIELIGEKETSLRKEINNLRARLQEPSAQANCCDSEKNGDIGQQIKTLDQKIERVA  
EATRMLNGLDNEFDRLIVPEPDVDFDAKWNELDARINVTEKNAEEHCFYIEETLRGAINGEVGDQLKLV  
DQKIQSLEDRLGSLVLLQMTNNTGAELSPPGAAALPGVSGSGDERVMMELNHLKDKVQVVEDICLLNIQGG  
PHGMEGALPNREDRAVRDSLHLLKSLNDTMRKFKQETEQTIQKLQQDFSLYSQLNHTENDVTHLQKEMS  
NCRAGENAGMGRFTKVGEQERTVDLPSQHPVAHCCSQLEERWQRLQSQVISELDACKECTQGVQREVS  
MVEGRVSHMEKTC SKLDSISGNLQRIKEGLNKHVSSLWNCVRQMNGTLRSHSRDISGLKNSVQQFYSHVF  
QISTDLQDLVKFQPSAKAPSPPPPAEAPKEPLQPEPAPRRPSGPATAEDPGRRPVLQRPPEERPPQPPG  
STGVIAETGQAGPPAGAGVSGRGLPRGVDGQTGSGTVPGAEGFAGAPGYPKSPPVASPGAPVPSLVSFSA  
GLTQKPFPSDGGVLFNKVLVNDGDVYNPSTGVFTAPYDGRYLITATLTPERDAYVEAVLSVSNASVAQL  
HTAGYRREFLEYHRPPGALHTCGGPGAFHLIVHLKAGDAVNWVTGGKLAHTDFDEMSTFSGVFLYPFL  
SHL

**TRTRPLEQKLISEEDLAANDILDYKDDDDKV**

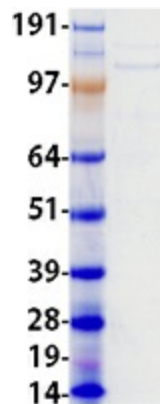
Tag:	C-Myc/DDK
Predicted MW:	115.5 kDa
Concentration:	>0.05 µg/µL as determined by microplate BCA method
Purity:	> 80% as determined by SDS-PAGE and Coomassie blue staining
Buffer:	25 mM Tris-HCl, 100 mM glycine, pH 7.3, 10% glycerol



[View online »](#)

<b>Preparation:</b>	Recombinant protein was captured through anti-DDK affinity column followed by conventional chromatography steps.
<b>Note:</b>	For testing in cell culture applications, please filter before use. Note that you may experience some loss of protein during the filtration process.
<b>Storage:</b>	Store at -80°C.
<b>Stability:</b>	Stable for 12 months from the date of receipt of the product under proper storage and handling conditions. Avoid repeated freeze-thaw cycles.
<b>RefSeq:</b>	<a href="#">NP_114437</a>
<b>Locus ID:</b>	84034
<b>UniProt ID:</b>	<a href="#">Q9BXX0</a>
<b>RefSeq Size:</b>	4009
<b>Cytogenetics:</b>	18p11.32-p11.31
<b>RefSeq ORF:</b>	3159
<b>Synonyms:</b>	EMILIN-2; FOAP-10
<b>Summary:</b>	May be responsible for anchoring smooth muscle cells to elastic fibers, and may be involved not only in the formation of the elastic fiber, but also in the processes that regulate vessel assembly. Has cell adhesive capacity.[UniProtKB/Swiss-Prot Function]

### Product images:



Coomassie blue staining of purified EMILIN2 protein (Cat# TP314038). The protein was produced from HEK293T cells transfected with EMILIN2 cDNA clone (Cat# [RC214038]) using MegaTran 2.0 (Cat# [TT210002]).