

Product datasheet for **TP31400M**

PPP2R5C (NM_002719) Human Recombinant Protein

Product data:

Product Type: Recombinant Proteins
Description: Purified recombinant protein of Homo sapiens protein phosphatase 2, regulatory subunit B', gamma isoform (PPP2R5C), transcript variant 1, 100 µg

Species: Human

Expression Host: HEK293T

Expression cDNA Clone or AA Sequence: >RC214000 representing NM_002719
Red=Cloning site **Green**=Tags(s)

MLTCNKAGSRMVDAANSNGPPFQPVLLHIRDVPPADQEKLFIQKLRQCCVLFDFVSDPLSDLKWKEVKR
AALSEMVEYITHNRNVITEPIYPEVVMFAVNMFRLLPPSSNPTGAEFDPEEDEPTLEAAWPHLQLVYEF
FLRFLESPDFQPNIKKYIDQKFLVQLLELFDSEDPREDFLKTLLHRIYKFLGLRAYIRKQINNIFYR
FIYETEHHNGIAELLEILGSIINGFALPLKEEHKIFLLKVLPLHKVKSLSVYHPQLAYCVVQFLEKDST
LTEPVVMALLKYWPKTHSPKEVMFLNELEEILDVIEPSEFVKIMEPLFRQLAKCVSSPHFQVAERALYYW
NNEYIMSLISDNAAKILPIMFPSLYRNSKTHWNKTIHGLIYNALKLFMEMNQKLFDDCTQQFKAELKEK
LKMKEREEAWVKIENLAKANPQYTVYSQASTMSIPVAMETDGPLFEDVQMLRKTVKDEAHQAQKDPKKDR
PLARRKSELQPDPHTKKALEAHCRADELASQDGR

TRTRPLEQKLISEEDLAANDILDYKDDDDKV

Tag: C-Myc/DDK

Predicted MW: 60.9 kDa

Concentration: >0.05 µg/µL as determined by microplate BCA method

Purity: > 80% as determined by SDS-PAGE and Coomassie blue staining

Buffer: 25 mM Tris-HCl, 100 mM glycine, pH 7.3, 10% glycerol

Preparation: Recombinant protein was captured through anti-DDK affinity column followed by conventional chromatography steps.

Note: For testing in cell culture applications, please filter before use. Note that you may experience some loss of protein during the filtration process.

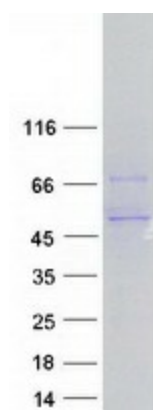
Storage: Store at -80°C.



[View online »](#)

| | |
|--------------------------|---|
| Stability: | Stable for 12 months from the date of receipt of the product under proper storage and handling conditions. Avoid repeated freeze-thaw cycles. |
| RefSeq: | NP_002710 |
| Locus ID: | 5527 |
| UniProt ID: | Q13362 |
| RefSeq Size: | 4167 |
| Cytogenetics: | 14q32.31 |
| RefSeq ORF: | 1572 |
| Synonyms: | B56G; B56gamma; PR61G |
| Summary: | The product of this gene belongs to the phosphatase 2A regulatory subunit B family. Protein phosphatase 2A is one of the four major Ser/Thr phosphatases, and it is implicated in the negative control of cell growth and division. It consists of a common heteromeric core enzyme, which is composed of a catalytic subunit and a constant regulatory subunit, that associates with a variety of regulatory subunits. The B regulatory subunit might modulate substrate selectivity and catalytic activity. This gene encodes a gamma isoform of the regulatory subunit B56 subfamily. Alternatively spliced transcript variants encoding different isoforms have been identified. [provided by RefSeq, Jul 2008] |
| Protein Families: | Druggable Genome, Phosphatase |
| Protein Pathways: | Oocyte meiosis, Wnt signaling pathway |

Product images:



Coomassie blue staining of purified PPP2R5C protein (Cat# [TP314000]). The protein was produced from HEK293T cells transfected with PPP2R5C cDNA clone (Cat# [RC214000]) using MegaTran 2.0 (Cat# [TT210002]).