

Product datasheet for **TP313997**

VCX2 (NM_016378) Human Recombinant Protein

Product data:

Product Type: Recombinant Proteins

Description: Recombinant protein of human variable charge, X-linked 2 (VCX2), 20 µg

Species: Human

Expression Host: HEK293T

Expression cDNA Clone or AA Sequence: >RC213997 representing NM_016378
Red=Cloning site **Green**=Tags(s)

MSPKPRASGPPAKATEAGKRKSSSQPSPDPKKKTKVAKKGKAVRRGRRGKKGAAATKMAAVTAPAEESA
PAAPGSPDQPSQELPQHELPPEEPVSEGTQHDPLSQESEVEEPLSQESEVEEPLTVWMASFPVSESTD

TRTRPLEQKLISEEDLAANDILDYKDDDDKV

Tag: C-Myc/DDK

Predicted MW: 14.5 kDa

Concentration: >0.05 µg/µL as determined by microplate BCA method

Purity: > 80% as determined by SDS-PAGE and Coomassie blue staining

Buffer: 25 mM Tris-HCl, 100 mM glycine, pH 7.3, 10% glycerol

Preparation: Recombinant protein was captured through anti-DDK affinity column followed by conventional chromatography steps.

Note: For testing in cell culture applications, please filter before use. Note that you may experience some loss of protein during the filtration process.

Storage: Store at -80°C.

Stability: Stable for 12 months from the date of receipt of the product under proper storage and handling conditions. Avoid repeated freeze-thaw cycles.

RefSeq: [NP_057462](#)

Locus ID: 51480

UniProt ID: [Q9H322](#)

RefSeq Size: 817

Cytogenetics: Xp22.31



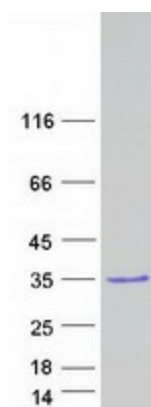
[View online »](#)

RefSeq ORF: 417

Synonyms: VCX-2r; VCX2R; VCXB

Summary: This gene belongs to the VCX/Y gene family, which has multiple members on both X and Y chromosomes that are expressed exclusively in male germ cells. The VCX gene cluster is polymorphic in terms of copy number; different individuals may have a different number of VCX genes. This gene contains two copies of a 30 nt tandem repeat. Deletion of a nearby member of this family was implicated in cognitive disability. [provided by RefSeq, Feb 2015]

Product images:



Coomassie blue staining of purified VCX2 protein (Cat# TP313997). The protein was produced from HEK293T cells transfected with VCX2 cDNA clone (Cat# [RC213997]) using MegaTran 2.0 (Cat# [TT210002]).