

## Product datasheet for **TP313987L**

### **IL1F10 (NM\_032556) Human Recombinant Protein**

#### **Product data:**

<b>Product Type:</b>	Recombinant Proteins
<b>Description:</b>	Recombinant protein of human interleukin 1 family, member 10 (theta) (IL1F10), transcript variant 1, 1 mg
<b>Species:</b>	Human
<b>Expression Host:</b>	HEK293T
<b>Expression cDNA Clone or AA Sequence:</b>	>RC213987 protein sequence <b>Red</b> =Cloning site <b>Green</b> =Tags(s)  MCSLPMARYYIIKYADQKALYTRDGQLLVGDPVADNCCAEEKICTLPNRLDRTKVPIFLGIQGGSRCLAC VETEEGPSLQLEDVNIEELYKGGEEATRFTFFQSSSGSAFRLEAAAWPGWFLCGPAEPQQPVQLTKESEP SARTKFYFEQSW  <b>TRTRPLEQKLISEEDLAANDILDYKDDDDKV</b>
<b>Tag:</b>	C-Myc/DDK
<b>Predicted MW:</b>	16.8 kDa
<b>Concentration:</b>	>0.05 µg/µL as determined by microplate BCA method
<b>Purity:</b>	> 80% as determined by SDS-PAGE and Coomassie blue staining
<b>Buffer:</b>	25 mM Tris-HCl, 100 mM glycine, pH 7.3, 10% glycerol
<b>Preparation:</b>	Recombinant protein was captured through anti-DDK affinity column followed by conventional chromatography steps.
<b>Note:</b>	For testing in cell culture applications, please filter before use. Note that you may experience some loss of protein during the filtration process.
<b>Storage:</b>	Store at -80°C.
<b>Stability:</b>	Stable for 12 months from the date of receipt of the product under proper storage and handling conditions. Avoid repeated freeze-thaw cycles.
<b>RefSeq:</b>	<u><a href="#">NP_115945</a></u>
<b>Locus ID:</b>	84639
<b>UniProt ID:</b>	<u><a href="#">Q8WWZ1</a></u>



[View online »](#)

RefSeq Size: 1366

Cytogenetics: 2q14.1

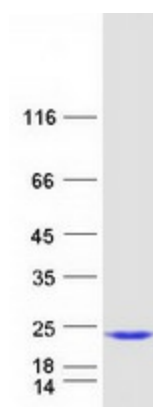
RefSeq ORF: 456

Synonyms: FIL1-theta; FKSG75; IL-1HY2; IL-38; IL1-theta; IL1HY2

**Summary:** The protein encoded by this gene is a member of the interleukin 1 cytokine family. This gene and eight other interleukin 1 family genes form a cytokine gene cluster on chromosome 2. This cytokine is thought to participate in a network of interleukin 1 family members to regulate adapted and innate immune responses. Two alternatively spliced transcript variants encoding the same protein have been reported. [provided by RefSeq, Jul 2008]

**Protein Families:** Druggable Genome, Secreted Protein

### Product images:



Coomassie blue staining of purified IL1F10 protein (Cat# [TP313987]). The protein was produced from HEK293T cells transfected with IL1F10 cDNA clone (Cat# [RC213987]) using MegaTran 2.0 (Cat# [TT210002]).