

## Product datasheet for **TP313959L**

### Macrophage Inflammatory Protein 1 beta (CCL4L2) (NM\_001001435) Human Recombinant Protein

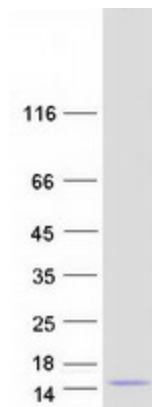
#### Product data:

Product Type:	Recombinant Proteins
Description:	Recombinant protein of human chemokine (C-C motif) ligand 4-like 1 (CCL4L1), 1 mg
Species:	Human
Expression Host:	HEK293T
Expression cDNA Clone or AA Sequence:	>RC213959 protein sequence <b>Red</b> =Cloning site <b>Green</b> =Tags(s)  MKLCVTVLSLLVLVAAFCSLALSAPMGSDPPTACCFSTARKLPHNFVVDYYETSSLCSQPAVWFQTKRG KQVCADPSESWWQEYVYDLELN  <b>TRTRPLEQKLISEEDLAANDILDYKDDDDKV</b>
Tag:	C-Myc/DDK
Predicted MW:	7.7 kDa
Concentration:	>0.05 µg/µL as determined by microplate BCA method
Purity:	> 80% as determined by SDS-PAGE and Coomassie blue staining
Buffer:	25 mM Tris-HCl, 100 mM glycine, pH 7.3, 10% glycerol
Preparation:	Recombinant protein was captured through anti-DDK affinity column followed by conventional chromatography steps.
Note:	For testing in cell culture applications, please filter before use. Note that you may experience some loss of protein during the filtration process.
Storage:	Store at -80°C.
Stability:	Stable for 12 months from the date of receipt of the product under proper storage and handling conditions. Avoid repeated freeze-thaw cycles.
RefSeq:	<a href="#">NP_001001435</a>
Locus ID:	9560
UniProt ID:	<a href="#">Q8NHW4</a>
RefSeq Size:	674



[View online »](#)

<b>Cytogenetics:</b>	17q12
<b>RefSeq ORF:</b>	276
<b>Synonyms:</b>	AT744.2; CCL4L; LAG-1; LAG1; SCYA4L
<b>Summary:</b>	<p>This gene is one of several cytokine genes that are clustered on the q-arm of chromosome 17. Cytokines are a family of secreted proteins that function in inflammatory and immunoregulatory processes. The protein encoded by this family member is similar to the chemokine (C-C motif) ligand 4 product, which inhibits HIV entry by binding to the cellular receptor CCR5. The copy number of this gene varies among individuals, where most individuals have one to five copies. This gene copy contains a non-consensus splice acceptor site at the 3' terminal exon found in other highly similar gene copies, and it thus uses other alternative splice sites for the 3' terminal exon, resulting in multiple transcript variants. [provided by RefSeq, Apr 2014]</p>
<b>Protein Families:</b>	Druggable Genome, Transmembrane
<b>Protein Pathways:</b>	Chemokine signaling pathway, Cytokine-cytokine receptor interaction, Cytosolic DNA-sensing pathway

**Product images:**

Coomassie blue staining of purified CCL4L1 protein (Cat# [TP313959]). The protein was produced from HEK293T cells transfected with CCL4L1 cDNA clone (Cat# [RC213959]) using MegaTran 2.0 (Cat# [TT210002]).