

## Product datasheet for **TP313954**

### **C20orf27 (NM\_001039140) Human Recombinant Protein**

#### Product data:

Product Type:	Recombinant Proteins
Description:	Recombinant protein of human chromosome 20 open reading frame 27 (C20orf27), 20 µg
Species:	Human
Expression Host:	HEK293T
Expression cDNA Clone or AA Sequence:	>RC213954 representing NM_001039140 <b>Red</b> =Cloning site <b>Green</b> =Tags(s)
	<p>MAAANKGKCLPGVVGLAQALPVGPGRRAIAAGNKPRVRSIRFAAGHDAEGSHSHVHFDEKLHDSVVMVTQ  ESDSSFLVKVGFLKILHRYEITFTLPPVHRLSKDVREAPVPSLHLKLLSVVPVPEGYSVKCEYSAHKEGV  LKEEILLACEGGTGTCVRVTQARVMDRHHGTPMLLDGVKCVGAELEYDSEHSDWHGFD</p> <p><b>TRTRPLEQKLISEEDLAANDILDYKDDDDKV</b></p>
Tag:	C-Myc/DDK
Predicted MW:	21.5 kDa
Concentration:	>0.05 µg/µL as determined by microplate BCA method
Purity:	> 80% as determined by SDS-PAGE and Coomassie blue staining
Buffer:	25 mM Tris-HCl, 100 mM glycine, pH 7.3, 10% glycerol
Preparation:	Recombinant protein was captured through anti-DDK affinity column followed by conventional chromatography steps.
Note:	For testing in cell culture applications, please filter before use. Note that you may experience some loss of protein during the filtration process.
Storage:	Store at -80°C.
Stability:	Stable for 12 months from the date of receipt of the product under proper storage and handling conditions. Avoid repeated freeze-thaw cycles.
RefSeq:	<u><a href="#">NP_001034229</a></u>
Locus ID:	54976
UniProt ID:	<u><a href="#">Q9GZN8</a></u>
RefSeq Size:	1376

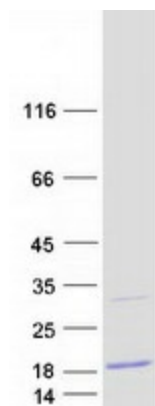


[View online »](#)

Cytogenetics: 20p13

RefSeq ORF: 597

### Product images:



Coomassie blue staining of purified C20orf27 protein (Cat# TP313954). The protein was produced from HEK293T cells transfected with C20orf27 cDNA clone (Cat# [RC213954]) using MegaTran 2.0 (Cat# [TT210002]).