

## Product datasheet for TP313932M

### SERPINB10 (NM\_005024) Human Recombinant Protein

#### Product data:

Product Type:	Recombinant Proteins
Description:	Recombinant protein of human serpin peptidase inhibitor, clade B (ovalbumin), member 10 (SERPINB10), 100 µg
Species:	Human
Expression Host:	HEK293T
Expression cDNA Clone or AA Sequence:	>RC213932 protein sequence <b>Red</b> =Cloning site <b>Green</b> =Tags(s)
	MDSLATSINQFALELSKKLAESAQGKNIFFSSWSISTSILTIVYLGAKGTTAAQMAQVLQFNRDQGVKCDP ESEKKRKMFEFNLSNSEEIHSDFQTLISEILKPNDYLLKTANAIYGEKTYAFHNKYLEDMKTYFGAEPQP VNFVEASDQIRKDINSWVERQTEGKIQNLLPDDSDSTTRMILVNALYFKGIWEHQFLVQNTTEKPRIN ETTSKPVQMMFMKKKLHIFHIEKPKAVGLQLYYKSRDLSLLILLPEDINGLEQLEKAITYEKLNEWTSAD MMELYEVQLHLPKFKLEDSYDLKSTLSSMGMSDAFSQSKADFSGMSSARNLFLSNVHFHKAFFEINEQGTE AAAGSGSEINIRVPSIEFNANHPFLFFIRHNKNTILFYGRCLCSP
	<b>TRTRPLEQKLISEEDLAANDILDYKDDDDKV</b>
Tag:	C-Myc/DDK
Predicted MW:	45.2 kDa
Concentration:	>0.05 µg/µL as determined by microplate BCA method
Purity:	> 80% as determined by SDS-PAGE and Coomassie blue staining
Buffer:	25 mM Tris-HCl, 100 mM glycine, pH 7.3, 10% glycerol
Preparation:	Recombinant protein was captured through anti-DDK affinity column followed by conventional chromatography steps.
Note:	For testing in cell culture applications, please filter before use. Note that you may experience some loss of protein during the filtration process.
Storage:	Store at -80°C.
Stability:	Stable for 12 months from the date of receipt of the product under proper storage and handling conditions. Avoid repeated freeze-thaw cycles.
RefSeq:	<u><a href="#">NP_005015</a></u>



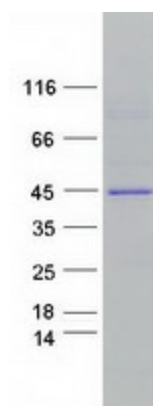
[View online »](#)

Locus ID: 5273  
UniProt ID: [P48595](#), [B2RC45](#)  
RefSeq Size: 1194  
Cytogenetics: 18q22.1  
RefSeq ORF: 1192  
Synonyms: PI-10; PI10

**Summary:** This gene is a member of the serpin peptidase inhibitor, clade B family and is found in a cluster of other similar genes on chromosome 18. The protein encoded by this gene appears to help control the regulation of protease functions during hematopoiesis. Variations in this gene may increase the risk of prostate cancer. [provided by RefSeq, Dec 2015]

**Protein Families:** Druggable Genome

### Product images:



Coomassie blue staining of purified SERPINB10 protein (Cat# [TP313932]). The protein was produced from HEK293T cells transfected with SERPINB10 cDNA clone (Cat# [RC213932]) using MegaTran 2.0 (Cat# [TT210002]).