

Product datasheet for TP313926L

Dystrophin (DMD) (NM_004021) Human Recombinant Protein

Product data:

Product Type: Recombinant Proteins
Description: Recombinant protein of human dystrophin (DMD), transcript variant Dp140b, 1 mg
Species: Human
Expression Host: HEK293T
Expression cDNA Clone or AA Sequence: >RC213926 representing NM_004021
Red=Cloning site Green=Tags(s)

MPSSLMLEVPALADFNRAWTELTDWLSLLDQVIKSQRVMVGDLEDINEMIIKQKATMQDLEQRRPQLEEL
 ITAAQNLKNKTSNQEARTIITDRIERIQNQWDEVQEHLQNRQQQLNEMLKDSTQWLEAKEEAEQVLGQAR
 AKLESWKEGPYTVDAIQKKITETKQLAKDLRQWQTNVDVANDLALKLLRDYSADDTRKVVHMITENINASW
 RSIHKRVSEREALEETHRLLQQFPLDLEKFLAWLTAETTANVLQDATRKERLLEDKGVKELMKQWQD
 LQGEIEAHTDVYHNLNLDENSQKILRSLEGSDDAVLLQRRLDNMNFKWSELRRKSLNIRSHLEASSDQWKRL
 HLSLQELLVWLQLKDDLSRQAPIGGDFPAVQKQNDVHRAFKRELKTKPEVIMSTLETVRIFLTEQPLEG
 LEKLYQEPRELPEERAQNVTRLLRKQAEVNTWEKLNLSADWQRKIDETLERLQELQEATDELKDLK
 RQAEVIKGSWQPVGDLLIDSLQDHLEKVKALRGEIAPLKENVSHVNDLARQLTTLGIQLSPYNLSTLEDL
 NTRWKLLQVAVEDRVRQLHEAHRDFGPASQHFLLSTSVQGPWERAISPKNVPPYINHETQTTCCWDHPKMT
 LYQSLADLNNVRFSAYRTAMKLRRLQKALCLDLLLSAACDALDQHNLKQNDQPMIDILQIINCLTTIYDR
 LEQEHNNLVNPLCVDMCLNWLNNVYDTGRTGRIRVLSFKTGIIISLCKAHLEDKYRYLQKVASSTGFCD
 QRRLLGLLLHDSIQIPRQLGEVASFGGSNIPEVSRSCFQFANNKPEIEAALFLDWMRLEPQSMVWLPVLHR
 VAAAEAKHQAKCNICKECPIIGFRYRSLKHFNYDICQSCFFSGRVAKGKMHYPMVEYCTPTTSGEDVR
 DFAKVLKNKFRTRKRYFAKHPRMGYLPVQTVLEGDNMETPVTLINFWPVSAPASSPQLSHDDTHSRIEHY
 ASRLAEMENSGSYLNDSPNESIDDEHLLIQHYCQSLNQSPLSQPRSPAQILISLESEERGERIL
 ADLEENRNLAQAEYDRLKQQHEHKGLSPLSPPEMPTSPQSPRDAELIAEAKLLRQHKGRLEARMQILE
 DHNKQLESQHLRLRQLLEQPQAEAKVNGTTVSSPSTSLQRSDDSSQPMLLRVVGSQTSDSMGEEDLLSPPQ
 DTSTGLEEVMEQLNNSFPSSRGHNVGSLFHMADDLGRAMESLVSVMTDEEGAE

TRTRPLEQKLISEEDLAANDILDYKDDDDKV

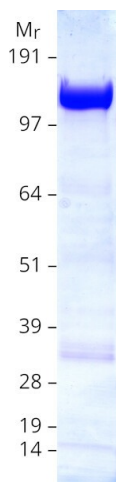
Tag: C-Myc/DDK
Predicted MW: 143 kDa
Concentration: >0.1 µg/µL as determined by microplate BCA method
Purity: > 80% as determined by SDS-PAGE and Coomassie blue staining



[View online »](#)

Buffer:	25 mM Tris-HCl, 100 mM glycine, pH 7.3, 10% glycerol
Preparation:	Recombinant protein was captured through anti-DDK affinity column followed by conventional chromatography steps.
Note:	For testing in cell culture applications, please filter before use. Note that you may experience some loss of protein during the filtration process.
Storage:	Store at -80°C.
Stability:	Stable for 12 months from the date of receipt of the product under proper storage and handling conditions. Avoid repeated freeze-thaw cycles.
RefSeq:	NP_004012
Locus ID:	1756
UniProt ID:	P11532 , A7E212
RefSeq Size:	7378
Cytogenetics:	Xp21.2-p21.1
RefSeq ORF:	3729
Synonyms:	BMD; CMD3B; DXS142; DXS164; DXS206; DXS230; DXS239; DXS268; DXS269; DXS270; DXS272; MRX85
Summary:	This gene spans a genomic range of greater than 2 Mb and encodes a large protein containing an N-terminal actin-binding domain and multiple spectrin repeats. The encoded protein forms a component of the dystrophin-glycoprotein complex (DGC), which bridges the inner cytoskeleton and the extracellular matrix. Deletions, duplications, and point mutations at this gene locus may cause Duchenne muscular dystrophy (DMD), Becker muscular dystrophy (BMD), or cardiomyopathy. Alternative promoter usage and alternative splicing result in numerous distinct transcript variants and protein isoforms for this gene. [provided by RefSeq, Dec 2016]
Protein Pathways:	Arrhythmogenic right ventricular cardiomyopathy (ARVC), Dilated cardiomyopathy, Hypertrophic cardiomyopathy (HCM), Viral myocarditis

Product images:



Coomassie blue staining of purified DMD protein (Cat# [TP313926]). The protein was produced from HEK293T cells transfected with DMD cDNA clone (Cat# [RC213926]) using MegaTran 2.0 (Cat# [TT210002]).