

## Product datasheet for **TP313925M**

### NCALD (NM\_001040625) Human Recombinant Protein

#### Product data:

Product Type:	Recombinant Proteins
Description:	Purified recombinant protein of Homo sapiens neurocalcin delta (NCALD), transcript variant 2, 100 µg
Species:	Human
Expression Host:	HEK293T
Expression cDNA Clone or AA Sequence:	>RC213925 protein sequence <b>Red</b> =Cloning site <b>Green</b> =Tags(s)

MGKQNSKLRPEVMQDLLESTDFTEHEIQEWYKGLRDCPSGHLMEEFKKIYGNFFPYGDASKFAEHVFR  
TFDANGDGTIDFREFIILSVTSRGKLEQLKWFASMYDLGNGYISKAEMLEIVQAIYKMOVSSVMKMPE  
DESTPEKRTEKIFRQMDTNRDGLKSMEEFIRGAKSDPSIVRLLQCDPSSAGQF

**TRTRPLEQKLISEEDLAANDILDYKDDDDKV**

Tag:	C-Myc/DDK
Predicted MW:	22.1 kDa
Concentration:	>0.05 µg/µL as determined by microplate BCA method
Purity:	> 80% as determined by SDS-PAGE and Coomassie blue staining
Buffer:	25 mM Tris-HCl, 100 mM glycine, pH 7.3, 10% glycerol
Preparation:	Recombinant protein was captured through anti-DDK affinity column followed by conventional chromatography steps.
Note:	For testing in cell culture applications, please filter before use. Note that you may experience some loss of protein during the filtration process.
Storage:	Store at -80°C.
Stability:	Stable for 12 months from the date of receipt of the product under proper storage and handling conditions. Avoid repeated freeze-thaw cycles.
RefSeq:	<a href="#">NP_001035715</a>
Locus ID:	83988
UniProt ID:	<a href="#">P61601</a> , <a href="#">B2RB70</a>



[View online »](#)

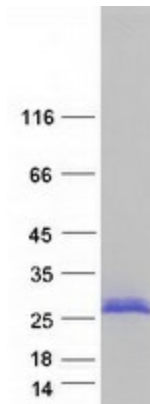
RefSeq Size: 3673

Cytogenetics: 8q22.3

RefSeq ORF: 579

**Summary:** This gene encodes a member of the neuronal calcium sensor (NCS) family of calcium-binding proteins. The protein contains an N-terminal myristoylation signal and four EF-hand calcium binding loops. The protein is cytosolic at resting calcium levels; however, elevated intracellular calcium levels induce a conformational change that exposes the myristoyl group, resulting in protein association with membranes and partial co-localization with the perinuclear trans-golgi network. The protein is thought to be a regulator of G protein-coupled receptor signal transduction. Several alternatively spliced variants of this gene have been determined, all of which encode the same protein; additional variants may exist but their biological validity has not been determined. [provided by RefSeq, Jul 2008]

### Product images:



Coomassie blue staining of purified NCALD protein (Cat# [TP313925]). The protein was produced from HEK293T cells transfected with NCALD cDNA clone (Cat# [RC213925]) using MegaTran 2.0 (Cat# [TT210002]).