

Product datasheet for TP313911L

KIF3B (NM_004798) Human Recombinant Protein

Product data:

Product Type:	Recombinant Proteins
Description:	Recombinant protein of human kinesin family member 3B (KIF3B), 1 mg
Species:	Human
Expression Host:	HEK293T
Expression cDNA Clone or AA Sequence:	>RC213911 representing NM_004798 Red=Cloning site Green=Tags(s)

MSKLLKSSSESVRVVRCRPMNGKEKAASYDKVVDVDVVLGQVSVKNPKGTAHEMPKTFTFDAVYDWNKQF
ELYDETRPLVDSVLQGFNGTIFAYGQTGTGKTYTMEGIRGDPEKRGVIPNSFDHIFTHISRSQNQQYLV
RASYLEIYQEEIRDLLSKDQTKRLELKERPDTGVYVKDLSSFVTKSVKEIEHVMNVGNQNRVSGATNMNE
HSSRSHAFVITIECSEVGLDGENHIRVGLNLVLAGSERQAKTGAQGERLKEATKINLSLSALGNVIS
ALVDGKSTHIPPYRDSKLRLLQDSLGGNAKTMVANVGPASYNVEETLTLRYANRAKNIKPKRVNEDP
KDALLREFQEEIARLKAQLEKRSIGRRKRREKRREGGGSGGGGEEEEEEEEEGEEGDDKDDYWREQQEK
LEIEKRAIVEDHSLVAEEKMRLLEKEKEMEDLRREKDAEMLGAKIKAMESKLLVGGKNIVDHTNEQQK
ILEQKRQEIAEQRREREIQQQMESRDEETLELKETYSSLQQEVDIKTKLKLKLFQAVKAEIHDLQE
EHIKERQELEQTQNELTRELKHLIIFPLEEKSKIMNRAFFDEEDHWKLHPITRLENQQMMKRPV
SAVGYKRPLSQHARMSMMIRPEARYRAENIVLLELDMPSTRTRDYEGPAIPKVQAALDAALQDEDEIQV
DASSFESTANKKSKARPKSGRKS GSSSSSSSGTPASQLYPQSRGLVPK

TRTRPLEQKLISEEDLAANDILDYKDDDDKV

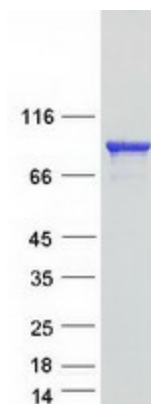
Tag:	C-Myc/DDK
Predicted MW:	84.9 kDa
Concentration:	>0.05 µg/µL as determined by microplate BCA method
Purity:	> 80% as determined by SDS-PAGE and Coomassie blue staining
Buffer:	25 mM Tris-HCl, 100 mM glycine, pH 7.3, 10% glycerol
Preparation:	Recombinant protein was captured through anti-DDK affinity column followed by conventional chromatography steps.
Note:	For testing in cell culture applications, please filter before use. Note that you may experience some loss of protein during the filtration process.
Storage:	Store at -80°C.



[View online »](#)

Stability:	Stable for 12 months from the date of receipt of the product under proper storage and handling conditions. Avoid repeated freeze-thaw cycles.
RefSeq:	NP_004789
Locus ID:	9371
UniProt ID:	O15066
RefSeq Size:	6103
Cytogenetics:	20q11.21
RefSeq ORF:	2241
Synonyms:	FLA8; HH0048; KLP-11; RP89
Summary:	The protein encoded by this gene acts as a heterodimer with kinesin family member 3A to aid in chromosome movement during mitosis and meiosis. The encoded protein is a plus end-directed microtubule motor and can interact with the SMC3 subunit of the cohesin complex. In addition, the encoded protein may be involved in the intracellular movement of membranous organelles. This protein and kinesin family member 3A form the kinesin II subfamily of the kinesin superfamily. [provided by RefSeq, Jul 2008]
Protein Families:	Druggable Genome

Product images:



Coomassie blue staining of purified KIF3B protein (Cat# [TP313911]). The protein was produced from HEK293T cells transfected with KIF3B cDNA clone (Cat# [RC213911]) using MegaTran 2.0 (Cat# [TT210002]).