

Product datasheet for TP313897M

SNAI3 (NM_178310) Human Recombinant Protein

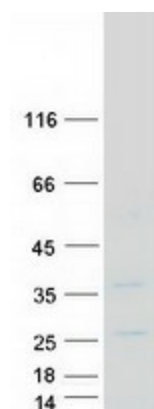
Product data:

Product Type:	Recombinant Proteins
Description:	Recombinant protein of human snail homolog 3 (Drosophila) (SNAI3), 100 µg
Species:	Human
Expression Host:	HEK293T
Expression cDNA Clone or AA Sequence:	>RC213897 representing NM_178310 <div> <div>Red</div>=Cloning site <div>Green</div>=Tags(s) </div> <p> MPRSFLVKTHSSHRVPNYRRLETQREINGACSACGGLVPLLPRDKEAPSVPGDLPQPWDRSSAVACISL PLLPRIEEALGASGLDALEVSEVDPRASRAAIVPLKDSLNLNLPPLLVLPTRWSPTLGPDRHGAPEKLL GAERMPRAPGGFECHFCHKPYHTLAGLARHRQLHCHLQVGRVFTCKYCDKEYTSLGALKMHIRTHTLPC T CKICGKAFSRPWLLQGHVRTHTGEKPYACSHCSRAFADRSNLR AHLQTHSDAKKYRCRRCTKTF SRMSLL ARHEESGCCPGP </p> <div> <div>TR</div> <div>TRPLEQKLISEEDLAANDILDYKDDDDKV</div> </div>
Tag:	C-Myc/DDK
Predicted MW:	32.3 kDa
Concentration:	>0.05 µg/µL as determined by microplate BCA method
Purity:	> 80% as determined by SDS-PAGE and Coomassie blue staining
Buffer:	25 mM Tris-HCl, 100 mM glycine, pH 7.3, 10% glycerol
Preparation:	Recombinant protein was captured through anti-DDK affinity column followed by conventional chromatography steps.
Note:	For testing in cell culture applications, please filter before use. Note that you may experience some loss of protein during the filtration process.
Storage:	Store at -80°C.
Stability:	Stable for 12 months from the date of receipt of the product under proper storage and handling conditions. Avoid repeated freeze-thaw cycles.
RefSeq:	<u>NP_840101</u>
Locus ID:	333929


[View online »](#)

UniProt ID:	<u>Q3KNW1</u>
RefSeq Size:	1630
Cytogenetics:	16q24.2
RefSeq ORF:	876
Synonyms:	SMUC; SNAI3; Zfp293; ZNF293
Summary:	SNAI3 is a member of the SNAI1 gene family, named for the Drosophila snail gene, which plays roles in mesodermal formation during embryogenesis (Katoh and Katoh, 2003 [PubMed 12579345]).[supplied by OMIM, Apr 2009]

Product images:



Coomassie blue staining of purified SNAI3 protein (Cat# [TP313897]). The protein was produced from HEK293T cells transfected with SNAI3 cDNA clone (Cat# [RC213897]) using MegaTran 2.0 (Cat# [TT210002]).