

## Product datasheet for TP313873

### TCP1 beta (CCT2) (NM\_006431) Human Recombinant Protein

#### Product data:

Product Type:	Recombinant Proteins
Description:	Recombinant protein of human chaperonin containing TCP1, subunit 2 (beta) (CCT2), 20 µg
Species:	Human
Expression Host:	HEK293T
Expression cDNA Clone or AA Sequence:	>RC213873 protein sequence <b>Red</b> =Cloning site <b>Green</b> =Tags(s)

MASLSLAPVNIKAGADEERAETARLTSFIGAIAIGDLVKSTLGPKGMDKILLSSGRDASLMVTNDGATI  
LKNIGVDNPAAKVLVDMSRVQDDEVDGTTTSVTVLAAELLREAESLIAKKIHPQTIIAGWREATKAAREA  
LLSSAVDHGSDEVKFRQDLMNIAGTTLSSKLLTHHKDHFTKLAVEAVLRLKGSNLEAIHIIKKLGGSLA  
DSYLDEGFLLDKKIGVNPQKRIENAKILIAN TGMDTDKIKIFGSRVRVDSTAKVAEIEHAEKEKMKEKVE  
RILKHGINCFINRQLIYNYPEQLFGAAGVMAIEHADFAVERLALVTGGEIASTFDHPELVKLGSCKLIE  
EVMIGEDKLIHFSGVALGEACTIVLRGATQQILDEAERSLHDALCVLAQTVKDSRTVYGGGCSEMLMAHA  
VTQLANRTPGKEAVAMESYAKALRMLPTIADNAGYDSADLVAQLRAAHSEGNTTAGLDMREGTIGDMAI  
LGITESFQVKRQVLLSAAEAAEVILRVDNIIKAAPRKRVPDHHPC

**TRTRPLEQKLISEEDLAANDILDYKDDDDKV**

Tag:	C-Myc/DDK
Predicted MW:	57.3 kDa
Concentration:	>0.05 µg/µL as determined by microplate BCA method
Purity:	> 80% as determined by SDS-PAGE and Coomassie blue staining
Buffer:	25 mM Tris-HCl, 100 mM glycine, pH 7.3, 10% glycerol
Preparation:	Recombinant protein was captured through anti-DDK affinity column followed by conventional chromatography steps.
Note:	For testing in cell culture applications, please filter before use. Note that you may experience some loss of protein during the filtration process.
Storage:	Store at -80°C.
Stability:	Stable for 12 months from the date of receipt of the product under proper storage and handling conditions. Avoid repeated freeze-thaw cycles.



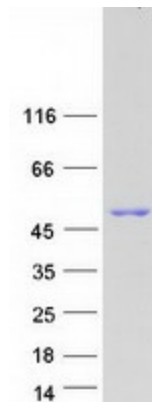
[View online »](#)

RefSeq:	<a href="#">NP_006422</a>
Locus ID:	10576
UniProt ID:	<a href="#">P78371</a> , <a href="#">V9HW96</a> , <a href="#">B7ZAT2</a>
RefSeq Size:	1962
Cytogenetics:	12q15
RefSeq ORF:	1605
Synonyms:	99D8.1; CCT-beta; CCTB; HEL-S-100n; PRO1633; TCP-1-beta

**Summary:** The protein encoded by this gene is a molecular chaperone that is a member of the chaperonin containing TCP1 complex (CCT), also known as the TCP1 ring complex (TRiC). This complex consists of two identical stacked rings, each containing eight different proteins. Unfolded polypeptides enter the central cavity of the complex and are folded in an ATP-dependent manner. The complex folds various proteins, including actin and tubulin. Two transcript variants encoding different isoforms have been found for this gene. [provided by RefSeq, Nov 2010]

**Protein Families:** Druggable Genome

### Product images:



Coomassie blue staining of purified CCT2 protein (Cat# TP313873). The protein was produced from HEK293T cells transfected with CCT2 cDNA clone (Cat# [RC213873]) using MegaTran 2.0 (Cat# [TT210002]).