

Product datasheet for **TP313870**

SERPINA11 (NM_001080451) Human Recombinant Protein

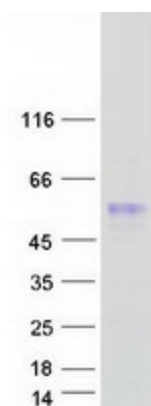
Product data:

| | |
|---------------------------------------|---|
| Product Type: | Recombinant Proteins |
| Description: | Recombinant protein of human serpin peptidase inhibitor, clade A (alpha-1 antiproteinase, antitrypsin), member 11 (SERPINA11), 20 µg |
| Species: | Human |
| Expression Host: | HEK293T |
| Expression cDNA Clone or AA Sequence: | >RC213870 representing NM_001080451 Red =Cloning site Green =Tags(s) |
| | <p>MGPAWLWLLGTGILASVHCQPLLAHGDKSLQGPQPPRHQLSEPPAPAYHRITPTITNFALRLYKELAADAP GNIFFSPVSISTTLALLSLGAQANTSALILEGLGFNLTETPEADIHQGFRSLLHTLALPSPKLELVGNS LFLDKRLKPRQHYLDSIKELYGAFASANFTDSVTTGRQINDYLRRQTYGQVVDCLPEFSQDTFMVLANY IFFKAKWKHPFSRYQTQKQESFFVDERTSLQVPMMHQKEMHRFLYDQDLACTVLQIEYRGNALALLVLPD PGKMKQVEAALQPQTLRKWGQLLLPSLLDLHLPRFSISGTYNLEDILPQIGLTNINLEADFSGVTGQLN KTISKVSHKAMVDMSEKGTAGAASGLLSQPPSLNTMSDPHAHFNRPFLLLLWEVTTQSLFLGKVVNPV AG</p> <p>TRTRPLEQKLISEEDLAANDILDYKDDDDKV</p> |
| Tag: | C-Myc/DDK |
| Predicted MW: | 46.8 kDa |
| Concentration: | >0.05 µg/µL as determined by microplate BCA method |
| Purity: | > 80% as determined by SDS-PAGE and Coomassie blue staining |
| Buffer: | 25 mM Tris-HCl, 100 mM glycine, pH 7.3, 10% glycerol |
| Preparation: | Recombinant protein was captured through anti-DDK affinity column followed by conventional chromatography steps. |
| Note: | For testing in cell culture applications, please filter before use. Note that you may experience some loss of protein during the filtration process. |
| Storage: | Store at -80°C. |
| Stability: | Stable for 12 months from the date of receipt of the product under proper storage and handling conditions. Avoid repeated freeze-thaw cycles. |



[View online »](#)

| | |
|-------------------|------------------------------------|
| RefSeq: | NP_001073920 |
| Locus ID: | 256394 |
| UniProt ID: | Q86U17 |
| RefSeq Size: | 1471 |
| Cytogenetics: | 14q32.13 |
| RefSeq ORF: | 1266 |
| Protein Families: | Druggable Genome, Secreted Protein |

Product images:

Coomassie blue staining of purified SERPINA11 protein (Cat# TP313870). The protein was produced from HEK293T cells transfected with SERPINA11 cDNA clone (Cat# [RC213870]) using MegaTran 2.0 (Cat# [TT210002]).