

## Product datasheet for TP313843L

### Nesprin 2 (SYNE2) (NM\_182910) Human Recombinant Protein

#### Product data:

**Product Type:** Recombinant Proteins

**Description:** Recombinant protein of human spectrin repeat containing, nuclear envelope 2 (SYNE2), transcript variant 2, 1 mg

**Species:** Human

**Expression Host:** HEK293T

**Expression cDNA Clone or AA Sequence:** >RC213843 representing NM\_182910  
**Red**=Cloning site **Green**=Tags(s)

MEGDRNVPPVPPASSTPYKPPYGKLLLPPGTDGGKEGPRVLNGNPQQEDGGLAGITEQQSGAFDRWEMIQ  
AQELHNKLIKQNLQQLNSDISAITTWLKKTEAELEMLKMAKPPSDIQEIELRVKRLQEILKAFDITYKAL  
WSVNVSSKEFLQTESPESTELQSRLRQLSLLWEAAQGAVDSWRGGLRQSLMQCQGSKTRPRSDVLFKDK  
FHQLSQNLLLWLASAKNRRQKAHVTDPKADPRALLECRRELMQLEKELVERQPQVDMLQEISNLLIKGH  
GEDCIEAEEKVHVIEKKLQQLREQVSDLMALQGTQNPASPLPSFDEVDSGDQPPATSVAPRAKFRRAVR  
TTEGEEETESRVPGSTRPQRSFLSRVVRAALPLQLLLLLLLLLLACLLPSSEEDYSCTQANNFARSFYPMML  
RYTNGPPPT

**TRTRPLEQKLISEEDLAANDILDYKDDDDKV**

**Tag:** C-Myc/DDK

**Predicted MW:** 48 kDa

**Concentration:** >0.05 µg/µL as determined by microplate BCA method

**Purity:** > 80% as determined by SDS-PAGE and Coomassie blue staining

**Buffer:** 25 mM Tris-HCl, 100 mM glycine, pH 7.3, 10% glycerol

**Preparation:** Recombinant protein was captured through anti-DDK affinity column followed by conventional chromatography steps.

**Note:** For testing in cell culture applications, please filter before use. Note that you may experience some loss of protein during the filtration process.

**Storage:** Store at -80°C.

**Stability:** Stable for 12 months from the date of receipt of the product under proper storage and handling conditions. Avoid repeated freeze-thaw cycles.



[View online >](#)

RefSeq: [NP\\_878914](#)

Locus ID: 23224

UniProt ID: [Q8WXH0](#)

RefSeq Size: 3103

Cytogenetics: 14q23.2

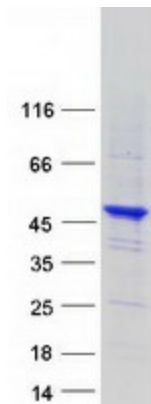
RefSeq ORF: 1287

Synonyms: EDMD5; KASH2; Nesp2; Nesprin-2; NUA; NUANCE; SYNE-2; TROPH

**Summary:** The protein encoded by this gene is a nuclear outer membrane protein that binds cytoplasmic F-actin. This binding tethers the nucleus to the cytoskeleton and aids in the maintenance of the structural integrity of the nucleus. Several transcript variants encoding different isoforms have been found for this gene. [provided by RefSeq, Mar 2009]

**Protein Families:** Druggable Genome, Transcription Factors

### Product images:



Coomassie blue staining of purified SYNE2 protein (Cat# [TP313843]). The protein was produced from HEK293T cells transfected with SYNE2 cDNA clone (Cat# [RC213843]) using MegaTran 2.0 (Cat# [TT210002]).