

## Product datasheet for **TP313842M**

### **SNX20 (NM\_182854) Human Recombinant Protein**

#### **Product data:**

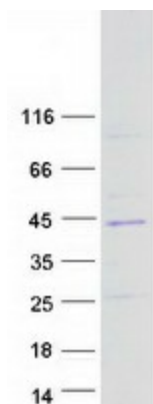
|  |  |
|--|--|
| <b>Product Type:</b>                         | Recombinant Proteins   |
| <b>Description:</b>                          | Recombinant protein of human sorting nexin 20 (SNX20), transcript variant 1, 100 µg  |
| <b>Species:</b>                              | Human  |
| <b>Expression Host:</b>                      | HEK293T  |
| <b>Expression cDNA Clone or AA Sequence:</b> | >RC213842 representing NM_182854<br><b>Red</b> =Cloning site <b>Green</b> =Tags(s)<br><br>MASPEHPGSPGCMGPITQCTARTQQEAPATGPDLPHPGPDGHLDTHTSGLSSNSSMTTRELQQYWQNQKCR<br>WKHVKLLFEIASARIEERKVSFVYQIIVITGFSFDNNKAVLERRYSDFAKLQKALLKTFREEIEDVEF<br>PRKHLTGNAEEMICERRRALQEYLGLLYAIRCVRRSREFLDFLTRPELREAFGCLRAGQYPRALELLLR<br>VLPLQEKLTAHCPAAAVPALCAVLLCHRDLDRPAEFAAGERALQRLQAREGHRYAPLLDAMVRLAYAL<br>GKDFVTLQERLEESQLRRPTPRGITLKELTVREYLH<br><br><b>TRTRPLEQKLISEEDLAANDILDYKDDDDKV</b> |
| <b>Tag:</b>                                  | C-Myc/DDK  |
| <b>Predicted MW:</b>                         | 36 kDa   |
| <b>Concentration:</b>                        | >0.05 µg/µL as determined by microplate BCA method   |
| <b>Purity:</b>                               | > 80% as determined by SDS-PAGE and Coomassie blue staining  |
| <b>Buffer:</b>                               | 25 mM Tris-HCl, 100 mM glycine, pH 7.3, 10% glycerol   |
| <b>Preparation:</b>                          | Recombinant protein was captured through anti-DDK affinity column followed by conventional chromatography steps.   |
| <b>Note:</b>                                 | For testing in cell culture applications, please filter before use. Note that you may experience some loss of protein during the filtration process.   |
| <b>Storage:</b>                              | Store at -80°C.  |
| <b>Stability:</b>                            | Stable for 12 months from the date of receipt of the product under proper storage and handling conditions. Avoid repeated freeze-thaw cycles.  |
| <b>RefSeq:</b>                               | <u><a href="#">NP_878274</a></u>   |
| <b>Locus ID:</b>                             | 124460   |



[View online »](#)

|               |  |
|---------------|--|
| UniProt ID:   | <a href="#">Q7Z614</a>   |
| RefSeq Size:  | 1457   |
| Cytogenetics: | 16q12.1  |
| RefSeq ORF:   | 948  |
| Synonyms:     | SLIC1  |
| Summary:      | SNX20 interacts with the cytoplasmic domain of PSGL1 (SELPLG; MIM 600738) and cycles PSGL1 into endosomes.[supplied by OMIM, Feb 2010] |

### Product images:



Coomassie blue staining of purified SNX20 protein (Cat# [TP313842]). The protein was produced from HEK293T cells transfected with SNX20 cDNA clone (Cat# [RC213842]) using MegaTran 2.0 (Cat# [TT210002]).